

# Belleville Times

Serving Belleville Since 1909

(USPS 049-230)

Published Every Thursday  
At 155A Washington Ave.  
Belleville, N.J. 07109.

Publisher: Frank A. Orechio

Editor: Christopher Bifani

Annual Subscription \$14.00  
Senior Citizens \$7.00

To report news and other items  
of interest, call:

759-3200

Second-Class Postage Paid  
At Newark, N.J.  
Postmaster: Send address  
changes to The Belleville Times,  
155A Washington Ave., Belleville, N.J. 07109

## Guy Savino

One of America's greatest journalists answered his last call recently. His name — Guy Savino — editor/publisher of the Bergen County Leader newspapers.

Guy Savino was a giant in the profession. His columns sparked with words of wisdom. Those among us who were not readers of Savino's columns lost the opportunity to have contact with greatness. Guy Savino was to New Jersey journalism what James Reston is on the national scene.

A principled writer, Savino was a shrewd, investigative reporter. For years he discharged the enormous responsibility as Newark Bureau Chief for the old Newark News.

Savino started his newspaper career with the old Newark News during the Market Crash of

1929 and shortly thereafter, 1930-31, his articles led to uncovering scandals at Newark's waterfront, which ultimately ended up with indictments of public officials and dismantling of one of the state's strongest political machines.

Guy Savino was more than a reporter — he was a crusader. He had no patience with public officials who failed to do their best. He couldn't stand a public official thought to be corrupt. A kind and gentle soul, Guy Savino will forever live in the memory of those fortunate to call him friend — as a human being of great courage who championed the most complex causes of our time. Through his writings, Guy Savino has left an indelible imprint upon a century of time that claimed his greatness.

## Foot patrol

Has the time arrived for patrolmen to start pounding the beat again? We think the policy should never have been abandoned.

The sight of a man or woman in blue walking the streets of our town gives aid and comfort to our residents and merchants. There is no doubt that crime is on the increase — that there will be more and more stores subject to burglaries. The Belleville Chamber of Commerce is in favor of cops pounding the Washington Avenue beat.

Public Safety Commissioner Ralph DiRuggiero has given the public assurances that foot patrols will return to Washington Avenue.

It's not too soon to re-establish the practice tomorrow. True or not, Washington Avenue merchant Nick Raimo makes the unchallenged charge that there is an unexpected surge in violent crimes on Washington Avenue — stating, "There have been hold-ups, shootings — they tried to rob women's purses last week and there are even hookers working the Avenue at night."

"Hookers working the Avenue at night? In Belleville? Unbelievable! If true, this serious charge requires the public to examine the efficiency of our Public Safety Department leadership. Belleville is basically a solid working class community. It has a longstanding reputation for comfortable and safe living. If there are hookers peddling their wares on Washington Avenue, Belleville, it's time our religious leaders looked into the matter and addressed the problem — if indeed one exists — by approaches to the appropriate elected officials.

Our proximity to Newark where crime is rising at ever higher levels leads one to the logical conclusion that Newark's crime will spill over into neighboring Belleville. This possibility alone should alert our elected officials to the need to establish a special post to our southern border and stop the infiltration of Belleville streets by Newark hookers — and thus let Newark keep its dirty business in Newark.

## Belleville High School

Accolades to our leaders in the Belleville School System who are introducing innovative methods to underscore the fact that the Belleville School System, in the words of Belleville High School principal, Joseph Ciccone, is "in the business of learning and not in the business of passing." A new grading system designed by Ciccone will make it more difficult for students to simply pass courses. The new grading system converts the alphabetical grading to a numerical basis. An "A" under the old system to be in the range from 90 to 100 in the new system. A "B" under the old system has a range of 80 to 89 under the new system.

Of equal significance is the drug abuse policy recommended by Ciccone and now under consideration by the Board of Education. There are five steps in the program. The first is a

referral to a substance abuse program by the high school guidance staff and the final step of the program is expelling the student from school. If adopted by the School Board at its Sept. 8 meeting, the policy will be the first formal substance abuse policy for the school system.

Drugs are killers. One of the tragedies of their use is the suspicion that grade school students are also users. Drug use is public enemy Number One. It robs the country of its future leadership — not to discount the contribution of today's youth as tomorrow's adults at the local, county and state levels. We must do more than we are to insure that drug abuse is eliminated from our community. We commend Joe Ciccone for taking initiatives calculated to develop the best in our students.

## Trimming the national debt...

To the editor:

A plan to eliminate the interest on the National Debt.

Three year National Debt Bond at no interest. The amount purchased to be deductible from Income Tax for individual and joint returns.

Bond to be repaid at the end of 3 years without interest and not to be taxes at that time.

Why the plan will work:

From the Government standpoint:

1. Under the proposed new Tax Bill, the amount of a bond purchased would be deductible from income tax at a loss to the Government at 27%. However, the same amount would reduce the National Debt at a saving of 100% interest.

2. If a person or family purchases a

Bond in the same amount each year for 4 years, the Government would receive in the 4th year an amount to pay off the 1st year Bond purchased and so on each of the following years.

3. The National Debt should be transferred and the interest deficit eliminated in the 1st, 2nd, or 3rd year, depending on the amount of Bonds purchased and the cost of operating the plan.

4. With the use of interest free money the Government should be able to not only transfer the National Debt but to reduce it substantially provided waste and unnecessary spending is eliminated.

From the individual and family standpoint:

1. The purchase of a bond for a person in the 27% bracket over a period of 3 years would mean a saving on the income tax of 9% per year.

2. The saving of 9% per year equal to

interest earned would not be taxes.

3. A person or family buying a Bond in an equal amount each year for 4 years would receive in the 4th year the payment of the 1st year Bond so that he would be reimbursing his own money. From the Internal Revenue Service standpoint:

1. The Bonds wouldn't be deductible for those filing individual or joint returns.

2. The amount of the purchase would not change the income tax bracket.

Important:

The Government's use of the money should be restricted to the payment of the National Debt and to the cost of putting the plan into action. After the debt is transferred a further use might help to balance the Budget.

If you are interested in making this plan a reality, please write or contact: George T. Bowes, 681 Franklin Ave., Nutley, 07110. Phone: 667-3376.

## 'Concerned' about taxes...

To the editor:

By this date most Belleville taxpayers will have received their 1986 tax bill. A whopping 87 point increase! One third of this increase is attributable to the incompetency of our County Executive Peter Shapiro. The other two thirds is the result of the crazy spending and poor management policies of our own Board of Commissioners and our Board of Education.

Our Commissioners have increased the Municipal budget by over two million dollars, in spite of the fact that we received six million dollars in new ratables, an inflation has been virtually flat, and the services we receive leave a lot to be desired.

The Board of Education has also increased their budget by two million dollars. With the closing of two schools and the drop in enrollment of over 1600 students over the past decade, the taxpayers of this town must demand an accounting as to why the school budget has

increased dramatically every year.

Our five commissioners and seven members of our Board of Education have had free reign with our tax dollars for too long. Finally, in 1986, the people of Belleville began to "awake" from their apathetic sleep. The mass attendance at town meetings has brought to light the arrogant mis-use of our tax dollars. The proposed ten million dollar triangular folly may have been defeated, but the people of Belleville must be warned once again that the Commissioners NEVER rescind the ten-million-dollar bond. In fact, the ten million dollars they borrowed in our name, is sitting in Peoples' Bank right now. If we dare take our eyes off them for one minute, they will surely find ways to spend this cash and put us deeper in debt for the next 20 years.

It is of almost importance that we all show up at the next town meeting, Tuesday, September 9, 1986, at Belleville High School. We must insist No. 1, the ten

million dollar bond be rescinded and repaid; No. 2, the expansion of our police facilities be done in a more prudent fashion and at a cost much less than \$5 million; No. 3, our elected officials must begin to tighten their belts now so we will not have a repeat performance of this tax increase next year.

By the way, this year's tax increase does not include one dime of the \$5 million they are currently planning to spend. You'll start to get the bill next year for this one!

Remember, your involvement HAS made a difference. Homeowners and renters alike, must know their job doesn't end with a vote on election day. You must then continue to monitor the employees you elected.

See you at Belleville High School, September 9, at 8 P.M.

Vincent J. Fontanaro, President  
Concerned Citizens of Belleville, Inc.

## A job well done...

To the editor:

After reading your latest edition of the Belleville Times, August 28, I found myself sitting down to write you and congratulate you on a job well done.

I find the format of the paper very interesting, newsy, and in very good taste. So much so that I found myself curling out so many interesting articles for future use that my paper looked like cut-out "paper dolls."

## CCC alumni sought...

To the editor:

Three years ago, the National Association of Civilian Conservation Corps Alumni (NACCA) celebrated the 50th anniversary of the establishment of the Civilian Conservation Corps (CCC).

The NACCA is trying to locate about two million former members and

persons who were connected or affiliated with the CCC during the 1930's and 1940's. It is a known fact that many of these persons reside in New Jersey and areas serviced by your publications.

The NACCA is a young and growing organization with 125 chapters throughout the nation, and more are in the planning and development stages.

One of its major objectives is to have the CCC reactivated.

Anyone interested in the organization can write to NACCA, Jefferson Barracks, P.O. Box 14479, St. Louis, Missouri 63125-0479, for more information and literature.

Victor Vengrooskie  
Silver Spring, MD

## Poor politics

When the Belleville Board of Commissioners meets at Belleville High School September 9, they are likely to be greeted with some of the stiffest opposition yet seen during the drawn out drama over forthcoming municipal construction.

The reason is taxes. Now that the bills have finally arrived in the mailboxes of Bellevillites, the painful truth has hit home. Seniors on fixed incomes are being forced to ante up more than ever, while programs (like the senior citizen outings) are being cancelled.

School taxes are rising, too, even as schools have closed in recent years and major renovation to the middle school has yet to be completed.

It is inevitable that support for the new municipal construction will erode further in light of the huge tax hikes township property owners now face.

Perhaps the budget-strapped opponents of costly municipal construction will become so enraged — so vocal — as to succeed in stalling construction plans altogether.

Thus, the long awaited, much needed Belleville Public Safety Building — which architects say could be open for crimefighting in the summer of 1988 — may be in fact be delayed to 1988, 1990 or beyond.

What a shame!

If only the board of commissioners had foreseen the tax in-

creases — the writing on the wall — and had planned their project accordingly.

In May of 1985, it seemed a comparatively modest priced police station only would have received a mandate of public support.

Using architect Frank Richlan's yardstick of a year and a half building time, a police station which began construction in the fall of 1985 could have been completed in the spring of 1987, just a half year from now.

Also, a building which began construction last year would have cost the taxpayer substantially less than a building that breaks ground next year, due to inflation (which is more pronounced in the building industry than in the economy as a whole).

In the end, the delay (and, possible postponement) of this urgent municipal construction rests with the commissioners and their ill-fated \$10-million plan.

That plan, readers may recall, was touted as being a major catalyst toward revitalizing Washington Avenue. Somehow, the need for protecting Belleville's citizens with improved police facilities became secondary.

The fact is — A safer, cleaner town is the primary catalyst to townwide revitalization. Lower crime rates, not budget-busting construction, is what really attracts ratepayers. That's how it's always been, and that's how it will always be.

The commissioners simply played poor politics. They reached for the moon with their \$10 million plan and wound up grabbing nothing but air. They had the chance, the mandate, to build something the township desperately needs but instead tried — for over a year — to force through much more than the township can afford.

Wise politicians gauge the public's desires and act accordingly. Poor politicians ignore the public, as well as the economic conditions which are just around the corner.

Poor politics in 1985 and 1986 mistakenly placed township redevelopment before township safety. Poor politics in 1985 and 1986 is why a necessary public safety building is not under construction today.

Poor politics in 1985 and 1986 may well determine the outcome of municipal elections in 1987.

It is unfortunate that the next Belleville administration must pay the price for the poor politics currently played.

Whether next year's commissioners are comprised of incumbents, newcomers or a combination of both, they will be caught between a rock and a hard place. On the one hand will be a township which needs modern, efficient police headquarters to combat a rising tide of crime. On the other hand, will be a citizenry irate over a rising tide of taxes.

## Responds to Capanear...

Dear Editor:

Mr. Michael Capanear, in his "Letter to the Editor," published in the Belleville Times July 31, pointed to our neighbor Nutley, where the town's merchants are working together, sparing us their "downtown shopping area." Their constructive involvement includes improvements, and "ASTEFUL" signs to attract customers, and to make shopping in Nutley a pleasant experience.

The projects are the fruits of cooperation between the Nutley Town Commission and the Private, Non-profit Economic Development Corporation.

Reading of this self-help effort, it is not surprising that Mr. Capanear posed the question to the merchants on Washington Ave. in his letter, why they believe the way to attract shoppers to their bailiwick, known as Washington Ave. is to stick it to the taxpayers, with

the more than eager assistance of Belleville's commissioners, by construction of a \$10 million (PLUS) extravaganza, like some sort of tourist attraction?

Mr. Capanear's line of reasoning is most assuredly shared by the vast majority of Belleville's taxpayers, especially since they got a look at their taxbill this past week!!! A consolation is, that thanks to the taxpayers' efforts, coordinated by the Concerned Citizens of Belleville, Inc. the tab did not include the additional burden for the ill-conceived "taj-mahal." The criticism, directed at the Washington Ave merchants drew the immediate ire of their Association.

Mr. Lois J. Cicinia (Charles Jewelers), spokesman for the merchants Association, is not at all happy with the taxpayers position. In his letter to the Times of 8-7-86 he asks if the citizens (and presumably their prospective customers) are happy with conditions in the Town Center. If we are happy with the appearance of the storefronts. If we are happy with one municipal parking lot (capacity 80 cars) for 35,000 residents (we need space for the children's tricycles?)

Let me answer them. No, we are NOT happy. We are unhappy over the fact that the Washington Ave merchants are unable to solve THEIR problems, and worse, that they constantly are trying to blame US for their problem. Why do they feel WE are responsible? We are also unhappy, because you, the Washington Ave merchants, a couple of years ago opposed the construction of much needed Public Safety facility on Franklin Ave. next to the new fire station, an ideal location, and estimated, as verified by our own engineer, Mr. Siciliano, to be built for no more than \$1.6 million, and federally funded at that!!! But no, you insisted that the entire police force remain right next to your stores!!!

My advice to the merchants is to get busy and do a little investing of their own money for the benefit of their businesses, and not worry so much about our "happiness." Any attempt to pick the pockets of the Belleville taxpayer at this point in time is unthinkable.

Cornelis P. Vander Zwan  
Marion Ct.

## Letters to the Editor

### Tax hike hurts veterans...

To the editor:

Why does Belleville raise taxes \$300 to \$500 in one year?

They closed two schools and laid off teachers. If anything taxes should be lower.

The New Jersey Brotherhood of Carpenters froze their wages from May 1986 to May 1987. If they can do it, so can Belleville, N.J.

I was born in 1920. We had a depression from 1929 to 1938. When we graduated high school that year, jobs were hard to find. In 1942 we were drafted in the armed forces and served from three to five years. Pay started at one dollar a day, once a month.

The state of New Jersey has a large surplus. Why not give it to World War II

veterans? Many states gave bonuses to their vets.

To top it off we get lower social security and so do our wives.

They (the government) gave us nothing and we gave all. Now they are raising our taxes. They are socking it to us all the way.

I love Belleville (the beautiful town). I was born and raised here but I can't stay much longer.

Nixon also froze wages. Why doesn't the town do the same?

Also, why did they cancel the senior citizens trip to the shore this year? I wanted to go and so did other senior citizens.

Joseph Cernero  
Mitchell Street

## Golden Comments

By James R. Golden

That pesky \$2 a month access charge added to your telephone bill that comes to \$24 a year, whether used or not, by order of the Federal Communications Commission (FCC) and can go higher by decree of that agency is reducing phone rates throughout the nation for big business long line usage calls.

We the private individuals with a home phone are being forced by our federal government to subsidize big business lower telephone bills which is an outrage that only Congress can put an end to.

Realizing the apathy of the public to speak out against inroads upon their rights to fair play and resentment at being used as a "patsy" by BIG BROTHER, we took it upon ourselves to send the following letter to Mr. Mark Fowler, the Chairman of the FCC, a copy of which was sent to Senators Bradley and Lautenberg and Congressman Roe, which requested their aid.

My Dear Mr. Fowler:  
The unmitigated inequity of subjecting older citizens and others on low fixed income, who only utilize their telephone for local service, to a \$2 monthly "access charge" so that long distance call prices can be made cheaper, as recently ordered by the FCC, is not only unfairly discriminatory, but smacks of "class exploitation" designed to reduce the expenses of "big business" at the unconscionable cost of individuals who should not be constrained to subsidize corporations.

Since the \$2 monthly "access charge" has produced more than sufficient revenue to lower "long line" rates further, would it not be more expedient and pragmatic to revert back to the more reasonable original \$1 monthly access charge?

An even more sensible approach could be found by attaching the access charge only on actual calls made out of the local area by assessing a percentage charge on all such out of area calls.

Individuals should not be charged for services they do not use, merely because they have a phone line that had already been previously paid for.

If something is not done to correct this egregious surcharge Congress will have to intercede to end what appears to be a "rip off" of the home phone consumers.

I respectfully call upon your reflection of the repulsive harmful inroads this "confiscatory" access charge is creating.

Respectfully yours,  
Would that more of us "ripped-off" consumers would take the time and effort to write our Congressional representatives, calling upon them to end this damn "access charge" surcharge that condemns all of us to be "suckers" by decree of the FCC.

Pick up a pen and dash off a letter to Washington letting BIG BROTHER know we're sick of being "pushed around" and exploited to subsidize business at our expense. It's worth the satisfaction and 22 cent stamp to "sound off" on these bureaucrats.

# NUTLEY SAVINGS' 100th ANNIVERSARY BIRTHDAY BASH

BRING THE WHOLE FAMILY  
SATURDAY, SEPTEMBER 6th  
9 A.M. TO 5 P.M.

## SOMETHING FOR EVERYONE

### COME EARLY AND STAY LATE DON'T MISS ANY OF THE FUN!

AN  
OLD-TIME  
DIXIELAND  
BAND

CHILD  
CLOWNS

KEYSTONE  
COPS

FUBAR  
THE  
ROBOT

THE  
WORLD'S  
TALLEST  
UNCLE SAM

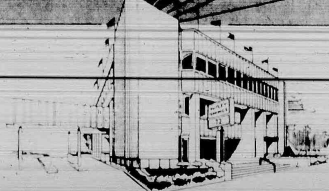
LAUREL  
& HARDY  
BALLOONS

CARICATURE  
SKETCH  
ARTIST

DUCK  
TELLER

LOT 20095  
PUP-OW  
BOOK

PUPPET  
SHOWS  
IN NOEL  
PIPER  
THEATER



celebrating  
"Our first 100 years"

Our lobby and walk-up window's will be open for banking from 9 a.m. to 12 noon but our drive-through lanes will be closed to make room for the party. And of course, automatic teller services are available at our MAT Money Machine, 24 hours a day.

# Nutley Savings

AND LOAN ASSOCIATION

MAIN OFFICE:

371 Franklin Avenue • Nutley, N.J. 07110 • Phone: 661-3200

BRANCH OFFICE:

221 Washington Street • Newark, N.J. 07102 • Phone: 623-7090



# Township TV producer seeks to spotlight local musicians

In the metropolitan area there is a widely held belief among musicians that they are being virtually blacklisted by local music radio and TV.

Although there are dozens of commercial radio stations and TV shows in New York and New Jersey, many local musicians claim

that their original recordings and videos are being ignored by local media. Instead, they believe, area radio and TV music programmers prefer the material released by musicians from overseas or from established nationwide acts.

Pat Mirucki of Wallace Street, Belleville, agrees that local musicians haven't received their fair

share of the local broadcasting pie. What's more, the 27-year-old TV producer is doing something about it. He has created his own television show, which spotlights local, independent music.

**The Underground Cafe.** Mirucki calls his forthcoming weekly half-hour feature "The Underground Cafe." Scheduled to debut on Suburban Cablevision's Channel 3 this fall, the new show promises to give plenty of Essex area bands a healthy dose of video coverage.

"We're trying to give bands a break," Mirucki told the Times. "Right now local bands have no place to go for broadcasting coverage. No matter how good they are—and believe me, they're good—local radio won't play their music and local TV won't air their videos."

Mirucki said he chose Suburban Cablevision as broadcasting company for "Underground Cafe" because of the company's far-reaching audience. In addition to serving some 6,000 Belleville homes, the cable carrier also serves neighboring Bloomfield and 15 more Essex communities.

Mirucki added that Suburban serves the adjacent county of Union "almost entirely," noting that just about every town there is served by the company except for Elizabeth.

Harrison and Secaucus in neighboring Hudson County will also be able to tune into his music show, as will several communities in nearby Middlesex County.

In all, "Underground Cafe" goes nearly to 200,000 homes, he said. Among the hosts Mirucki has lined up for the new show is Mary Taylor, a singer/songwriter, actress



Pretty as a picture — Mary Taylor, one of the hosts on Belleville Pat Mirucki's forthcoming music TV show, has experience in music, acting, and dance. She will be handling interviews, reviews and hosting chores for the "Underground Cafe."



Man on the scene — Township TV producer Pat Mirucki learned his trade by producing local TV news. Now he is expanding his horizons in the field of music broadcasting. (Photo by Christopher Hifano)

and dancer who performs with a local top forty band. Currently recording several of her own compositions for future release, Taylor shares her producer's contention that local musicians are ignored by local broadcast media.

"It's really not fair the way music radio and TV never play local stuff," Taylor said, "but at least with 'The Cafe' it's a start. Maybe if enough people see what we're trying to do, more broadcasters will open up their formats to let the locals in."

Taylor, 22, is a rocker from Rockland County. Upon graduation from Ramapo High School in

the early eighties, she began performing in club bands while attending acting school. Now, her schedule includes movie acting, club performing, and original song writing, all of which she fits in between commuting to Essex for "Underground Cafe" shoots.

**Subterranean setting.** One of the more interesting aspects of this ambitious Belleville's show is the set. John Schroeder, owner of The Dirt Club in Bloomfield, has let the "Underground Cafe" make its home set in the club's cellar.

Here, the walls have been previously painted with a variety

of colorful, surrealist art murals.

Tables and chairs for the cafe set were already down there, according to the owner. Schroeder told the Times the cellar was once an underground lounge for patrons, so all the props were already down there.

Mirucki said the programming of "Underground Cafe" will be varied and interesting. In addition to a heavy emphasis on original Essex performers, the show is to incorporate location shoots of Manhattan, shore area clubs, music news, reviews, and more.

Mirucki said Belleville original musicians seeking to appear on "Underground Cafe" may submit their resumes to The Underground Cafe, 56 Wallace Avenue, Belleville, N.J. 07109.

## Lawn Gone?



### Time to call Lawn King

All lawns need an annual program of lawn care and every program must contain both granular and spray. Some chemicals work better when applied in a granular form and others like weed controls and post emergent crab grass controls work better in a liquid form. All lawns also require periodic aeration and seed, but only Lawn King gives all these via LAWN COMBINE & SPRAY — THE BETTER WAY! WE KNOW IT'S THE ONLY WAY!

#### LAWN KING ANNUAL PROGRAM

1. Balanced Fertilization (Broadcast)	2. Weed Control (Broadcast)	3. Balanced Fertilization (Broadcast)	4. Power Aeration (Power Rolling)	5. Fertilization (Broadcast)
6. Crab Grass Control (Broadcast)	7. Crab Grass Control (Broadcast)	8. Crab Grass Control (Broadcast)	9. Crab Grass Control (Broadcast)	10. Crab Grass Control (Broadcast)
11. Crab Grass Control (Broadcast)	12. Crab Grass Control (Broadcast)	13. Crab Grass Control (Broadcast)	14. Crab Grass Control (Broadcast)	15. Crab Grass Control (Broadcast)
16. Crab Grass Control (Broadcast)	17. Crab Grass Control (Broadcast)	18. Crab Grass Control (Broadcast)	19. Crab Grass Control (Broadcast)	20. Crab Grass Control (Broadcast)

We are chemical application specialists. We know what your lawn needs and when it needs it. What you get is the program in which you get. The quality chemicals and seeds, only the best that we use. Spraying is the best way to apply chemicals and seeds. Granulars, seed and time are part of our program. Proper timing and application are always part of our program. We guarantee all of our work when you need them. By the time you know you need them it's too late anyway.

#### OPTIONAL PREPARATORY SERVICE

- Soil Test Analysis
- Soil pH Testing
- Soil Moisture Testing
- Soil Temperature Testing
- Soil Fertility Testing
- Soil Structure Testing



SQUARE FOOTAGE	QUARTERLY	TOTAL
3000	\$6.00	\$18.00
4000	\$8.00	\$24.00
5000	\$10.00	\$30.00
6000	\$12.00	\$36.00
7000	\$14.00	\$42.00

LARGER LAWNS PRICED PROPORTIONATELY. ALL PRICES PLUS SALES TAX.



**Lawn King**  
Nutley, Belleville, Bloomfield  
994-2255/743-1025

**\$10.00 OFF or 5%**

On Your First Year's Service (minimum 3,000 sq. ft.)

## Valley Chapel

(Assemblies of God)  
300 Valley Rd. Clifton, N.J.  
Dr. Philip D'Angelo, Pastor  
Presenting Christ as Saviour  
Baptizer-Healer-Coming King!

**Channel 35V UA Columbia**  
TV Program - Every Wednesday - 3:45 PM

**11:30 A.M. Channel 20G UA Columbia**

SUNDAY, September 7, 1986  
9:30 A.M. — Sunday Bible School  
10:45 A.M. — Morning Worship  
Topic: "The Way of Mastery"  
PRAYER SEMINARS starting September 7th thru October 5, 1986 — 6:30 P.M.  
No. 1 "How to Transform Prayer from Desire to Discipline, to Delight"

**PRAYER FOR THE SICK IN EVERY SERVICE**

## NOTICE!

**"WE CHANGED THE RULES"**

Buy Your Replacement Windows Direct From The Wholesaler! (Installation Included)

Specializing In Homes, Garden Apartments, Apartment Bldgs. And Commercial Bldgs.

Quality Windows At The Lowest Prices Possible  
Do Price \$199.00 Retailer \$300-\$500

WE HAVE CUT OUT THE MIDDLE MAN — CALL US NOW FOR A FREE ESTIMATE

No Gimmicks! Just Homes Prices  
**239-7579**

**TWIN CITY WINDOWS**

INSTALLATION COMPANY

40 Pompton Ave. — Cedar Grove

FULLY INSURED — MANUFACTURER'S REPRESENTATIVE  
OWNED & OPERATED BY FACTORY TRAINED TECHNICIANS  
WE ARE NO. 1 QUALITY INSTALLATIONS — WE CARRY A FULL PRODUCT LINE!

## DENTALLY SPEAKING

By Drs. James D. Maglia and Paul N. De Maio

Send Inquiries To: Dentally Speaking, 671 Franklin Avenue, Nutley, N.J. 07110, 667-4421

Send Inquiries To: Dentally Speaking, 671 Franklin Avenue, Nutley, N.J. 07110, 667-4421



## POSSIBLE SIGNS OF PINCHED NERVE

- Headaches/dizziness
- Whiplash
- Neck pain/light muscles
- Shoulder pain
- Pain down the arms
- Numbness in hands
- Low back pain/hip pain
- Sciatica
- Leg pain/numbness
- EMERGENCIES TREATED ANYTIME
- MOST INSURANCE ACCEPTED
- FAMILY FEES AVAILABLE
- MOST INSURANCE ACCEPTED

DR. RALPH J. DEMARCO

DR. RALPH J. DEMARCO

DR. RALPH J. DEMARCO

## Local center provides employment

The North Ward Center, a multi-purpose organization serving the Belleville area, is seeking individuals 55 years of age or older for paid employment of nonprofit community service agencies.

The program is part of the Federal Senior Community Service Project, administered through the National Council on Aging and the United States Department of Labor. The North Ward Center is the local sponsor.

Through the program, men and women who are at least 55 years of age and whose incomes meet federally established financial guidelines are placed in positions at nonprofit and public agencies. After gaining work experience, the participants are assisted in preparation for private sector



**The NORTH WARD CENTER**

employment.

Another component of the program offers interested individuals the opportunity to attend various types of training programs at no cost to them.

"The program is important because it allows individuals opportunities to contribute to the

community and to retain their self worth," said Stephen N. Aduabo, executive director of the North Ward Center. "It also gives community agencies assistance in a way they might not otherwise be able to afford."

For further information, contact Angela Miele at 481-0415.

## Belleville Middle School cited for excellence in computer program

Mario DiMaggio, principal of Belleville Middle School, has been informed by the New Jersey Department of Education that the school's "Computer Assistance Instruction Program" has been cited for its excellence.

The program is designed to augment the prescribed mathematics and reading courses in grades seven and eight. Those students identified as being below the state minimum proficiencies are given

assistance during their lunch/study and/or their elective courses. These students work at their own pace beginning with an entry level of one year below their Iowa Test results.

In addition to the computer program, additional work, designed to improve their deficiencies, is given to each student when he/she is not on the computer.

Mrs. Linda Albanese and Mrs. Patricia Russo were commended

for the success that the students have achieved. Mr. DiMaggio and the above mentioned teachers will present the program at the Urban Districts' Educational Technology Conference on December 5, 1986, at the Regional Curriculum Service Unit in Old Bridge, New Jersey.



REFRIGERATOR PERRY is the Bears Triple-Threat.

**Empty 'The Refrigerator' at FOR PETE'S SAKE**

**FOR PETE'S SAKE**

**Monday Nite Football  
Kickoff 9 P.M.  
Monday Sept. 8th**

153 Belleville Ave. Belleville 759-1516

**Jazz Twirl**  
Baton Twirling  
and  
Dance Corps  
Pom Pom Teams

Fall Term Begins  
September 10, 1986

DIRECTOR/CHOREOGRAPHER  
**GAIL BELLO**  
Judge - New Jersey 1st Dancing Association  
Graduate - Dance Educators of America Training School

LOCATION  
Italian-American Civic Association  
642 Franklin Avenue, Nutley

FOR INFORMATION CALL  
**235-1330**

**REFLECTIONS SALON**  
"A Full Service Salon"

Tuesday thru Friday  
SPECIALS

<b>PERMS</b> \$50 Includes Cut and Styling	<b>FOIL FROSTING</b> \$60 Includes Styling and Conditioning
--	---

11 High St. • Nutley • 667-6800

**PERSONAL FITNESS NAUTILUS CENTERS**

ARE YOU READY FOR AUTUMN?

Come in before Sept. 15 and beat our price increase

"Personal Fitness Centers Where Fitness gets Personal"

• karate self defense	• ab exerc.	• exercise classes
• free child care	• nordic ski machine	• sun tan bed
• diet programs	• nautilus	• voga
• nutritionist	• personal supervision	• free parking
• massage therapy	• nautilus leverage	• exercise bicycle
• chiropractor	• free weight machines	• men's & women's locker areas

Free Child Care — Expanded Hours: Wed. - Fri. 9 a.m. - 12

REGULAR HOURS  
Mon., Wed., Fri. — 6:30 a.m. - 9 p.m.  
Tues., Thurs. 9 a.m. - 9 p.m.  
Sat. 9 a.m. - 3 p.m., Sun. 9 a.m. - 11 a.m.

**Personal Fitness Nautilus Center**  
495 Franklin Avenue, Nutley • 667-0778  
163 Washington Avenue, Belleville • 759-6402

**FIREWORKS SPECTACULAR**  
IN HONOR OF  
**NUTLEY SAVINGS' 100th ANNIVERSARY**  
NUTLEY PARK OVAL  
MONDAY EVENING, SEPTEMBER 8th

Come out and see the greatest pyrotechnics display in the history of Nutley.

Don't miss the announcement of the Grand Prize winner in the Centennial Sweepstakes.

First and Second Prize winners will also be announced.

7:00 p.m.  
Gates Open

7:30 p.m. - 9:00 p.m.  
Live Entertainment featuring:  
The Denville Mimmers String Band  
and  
The Bobby Byrne Show

9:00 p.m.  
Sweepstakes Prize Winners announced  
Followed immediately by an extraordinary fireworks display by Garden State Fireworks

**RAIN DATE:**  
Next clear night

**Nutley Savings**  
AND LOAN ASSOCIATION

celebrating  
"Our first 100 years"

MAIN OFFICE:  
371 Franklin Avenue • Nutley, N.J. 07110 • 661-3200  
BRANCH OFFICE:  
221 Washington Street • Newark, N.J. 07102 • 623-7080



# Van Dyk redevelopment a Valley improvement

By Christopher Bifani

This summer an imposing decades-old chemical factory was transformed into a model of township industrial renewal.

Van Dyk Manufacturing Chemists, at the corner of Main and Williams Streets, has long been a Belleville landmark, thanks to its proximity to and visibility from Route 21, the state highway which runs along the east side of town.

That landmark, like the township itself, is changing fast. Director of Operations William Diggs told the Times of an ambitious, nearly-completed program of renovation that represents over \$1 million worth of investment since 1982.

**EXTERIOR REFURBISHING**  
"We started the outside work about four weeks ago," Diggs said, pointing to a large main building sporting a fresh coat of tan cement stucco. Other Van Dyk buildings were in the process of being renovated, while still others are scheduled to be "facelifted" in coming weeks.

All in all, the exterior phase of Van Dyk's renovation program is costing "about \$200,000, a pretty good deal," Diggs declared. The work is being performed by the Anchor Stone Company of Bayonne.

Diggs said the project, which he is overseeing, "adds to the beautification of the town." He added that another \$2,000 is being spent on landscaping, which is to include 25 shrubs, decorative rocks, and other aesthetic touches.

Route 21 motorists no longer see a complex of dingy buildings covered with tired, pre-war bricks. Instead the look is that of a contemporary renovation, which observers see as a positive improvement for the surrounding Valley neighborhood.

**INTERIOR UPGRADING**  
But the Van Dyk renovation program includes far more than just exterior refurbishing. The million dollar project includes considerable "interior upgrading" as well, Diggs said.

**NEW PILOT PLANT FACILITY**  
"We have several major projects going on," the operations director explained, "including a new pilot plant facility." He said this facility is a "secondary step" in the process which takes a researched chemical formula from testing to "full-blown plant production."

According to Diggs, the Van Dyk pilot plant facility cost "about \$250,000" and will be completed by the end of the week. During the Times August 25 photographic tour, the pilot plant—which simulates a production run in miniature—was already filled with machinery, piping, and other sophisticated equipment.

**NEW "TANK FARM"**  
Another phase of Van Dyk's upgrading is the recent installa-

tion of a "tank farm."

"A tank farm is used to store raw materials," Diggs explained, adding that "we previously stored our raw materials in 55 gallon drums."

At a cost of "about \$175,000" the eight 2500 gallon tanks in the farm replace 355 metal drums.

**NEW OFFICES**  
Van Dyk's white collar staff settled into new office quarters as a result of the firm's renovation program. According to Diggs, \$50,000 worth of office renovations have provided employees with re-paneled, repainted working environments.

"Van Dyk has spent alot of money in recent years," Diggs noted. "A few years ago we spent \$350,000 on our research and development (R&D) facility." The operations director explained that the R&D lab is where raw chemicals take the first step toward becoming marketable products, such as paba, an ingredient in suntan lotions which acts as a sunscreen. Diggs noted that Van Dyk is "still the leading producer" of paba.

But at a time when so many industrials are moving to the outer counties, southern states, and even overseas—why has Van Dyk chosen to remain—and reinvest—in Belleville?

**INVESTING IN BELLEVILLE**  
"We have unique, special equipment here that would be hard to duplicate or move," Diggs replied. He added that it's more feasible to upgrade the firm's Belleville facility than go elsewhere and start from scratch.

Another reason for staying in Belleville is the location, Diggs believes. He told the Times that 20 percent of the company's business is overseas and the plant's proximity to ports in neighboring Newark is ideal. He added that the northeast region itself is a major market for Van Dyk products and said that Belleville is right in the middle of the region.

Diggs said that maintaining the character of the Valley section of Belleville—unusual for it's mix of residential, commercial, and industrial neighbors—is a prime concern of the management.

"I do believe there is some difficulty in trying to maintain a neighborhood where manufacturers and single multi-family dwellings co-exists," Diggs said. "We have to be concerned about the environment. There are strong considerations such as noise pollution—we operate around the clock, but must still be considerate of our neighbors."

The operations director said his firm buys equipment with neighborhood harmony in mind. "We try to buy things that will operate quietly, efficiently," he said.

William Diggs is also ex-

ecutive vice president of the Belleville Chamber of Commerce. Considering that only five years ago he was a St. Louis, Missouri executive for a large conglomerate, how did this come to be?

"I was transferred from Mallinckrodt in 1982," Diggs said. He explained that in that year the Mallinckrodt conglomerate bought out Van Dyk and that he was the executive that was sent out to oversee the transition.

"I took an interest in the town and accepted a position on the board. Later, I was nominated and elected to the position of executive vice president." Diggs currently resides with his family in the nearby Essex community of Verona.

President of the Van Dyk Division, Michael Collins, is also a transplanted St. Louis resident.

Collins arrived at the Belleville plant in May, although he's been with Mallinckrodt for ten years. His family, in fact, remains in Missouri until he can locate permanent housing.

"We've got more construction going on right now than we know what to do with," Collins said of the renovations going on around him.

"We're doing alot around here," the division president said, adding that "this old site goes back to the late 1800's." He said there's nothing wrong with an old site, but that old sites have to be kept up and improved.

**VALLEY-WIDE IMPROVEMENT?**

Of the valley area, Collins said, "There's no reason why it can't look respectable."

Did he think other Valley industrials might follow the Van Dyk example?

"Don't know," he said, frankly, with a Missouri "show me" air, "but it would be great for the area."

Operations Director Diggs echoed his boss' sentiment.

"We'd like to see more improvement in the Valley. It has potential. But there's hesitance from people. When you first drive in, the Valley appears rundown, not maintained."

If it was upgraded—the houses, buildings and streets—it would create a much better impression on new people considering moving in, whether it be manufacturers or homeowners.

**NO FURTHER EXPANSION PLANNED**

Both Van Dyk officials said that no further expansion was planned by the firm in the foreseeable future. Part of the problem is lack of available land.

Van Dyk Manufacturing Chemists employs about 80, including several Belleville residents. The company produces ingredients for makers of consumer products, such as softeners, sunscreens, and other things which often appear as advertised features.



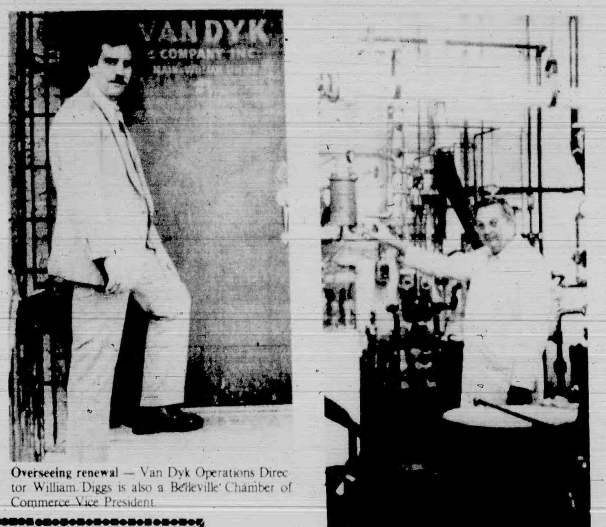
All dressed up — Van Dyk Manufacturing Chemists on Main Street in the Valley section have refurbished their entire exterior as part of a million dollar renovation. (Photos by Christopher Bifani)



New President — Michael Collins, formerly of St. Louis, Mo., arrived in Belleville to take the helm in time for Van Dyk's improvement.



Hard at work — Workers from Anchor Stone of Bayonne refurbish another Van Dyk building.



Overseeing renewal — Van Dyk Operations Director William Diggs is also a Belleville Chamber of Commerce Vice President.



Montclair & Vicinity

**Erwin Park**

A commuter's delight near lovely Erwin Park, featuring 4 bedrooms, 3½ baths, living room, dining room with fireplace, eat-in-kitchen and family room. Master suite has two bath tubs with skylight! \$239,900.

**SCHULTZ REAL ESTATE**  
50 Church St.  
Montclair, N.J. 07042  
763-5058



**BLOOMFIELD**

This Mother/Daughter located near the North center - situated on large lot features LR, BR, Lg. Eat in Kit, TV Rm - Plus LR, DR, 2 BR, Bath Asking \$185,000.

REALTOR - 743-2300

**MARZULLI**  
R.P. MARZULLI CO., INC.  
REAL ESTATE

**Dancesation**  
The Ultimate In Dance

Ballet \* Tap \* Jazz \* Acrobatics  
\* Low Impact Aerobic & Stretch Classes \*

Ages Pre-School thru Adult  
Registration Hours -  
August - Tuesday & Thursday  
10 AM - 7 PM  
Director - Susan Marrazzo DeVincenzo

382 Union Avenue  
Belleville, NJ 07109  
Classes Start Sept. 6th  
751-5259

## Events in the area

### Support groups in the area

**Toughlove**, for parents who have problems with their teens' behavior. 7:30 p.m. Thursday. Parks Dept., 44 Park Ave. Nutley 743-5511.

**Living with Cancer**, for cancer patients and their families. 7 to 9 p.m. third Wednesdays. Mountainside Hospital, Montclair. 429-6140 or 429-6122.

**Recovery Inc.**, a community mental health self-help group for nervous persons. 7:30 p.m. Wednesdays. Parks Dept., 44 Park Ave. Nutley 766-7466.

**Make Today Count**, a support group for patients and families dealing with cancer and other life threatening diseases. 7 p.m. Mondays. Clara Maass Medical Center, Belleville. 450-2230.

**UNHOOKED** for drug and alcohol abuse. 643-5050 noon to 7 p.m. Monday through Friday for New Jersey treatment program referrals and substance abuse information. Confidential.

**Women's support group** sponsored by The League for Family Service of Bloomfield and Glen Ridge. Women's issues and problems. Ongoing. 743-3737.

### Organizations for area singles

**New Jersey Moonrakers**, a club catering exclusively to tall and single adults. Meets 8:30 p.m. every second Tuesday of the month at the Meadowlands Hilton, 2 Harmon Plaza, Secaucus. All ages. \$3 for guests, free for members. 298-0964.

**The Singles Connection**, widowed, divorced, separated, first and third Thursdays. 8 to 11 p.m. Grace Episcopal Church, 200 Highfield Lane. Nutley. Rap groups, music, dancing. \$3. 235-1177.

**New Jersey Moonrakers**, tall and single adults. 8 to 10 p.m. second Tuesday. Meadowlands Hilton, 2 Harmon Plaza, Secaucus. Height requirements. \$3 per guest, members free. 298-0964.

**Jewish Singles** Friday night. 20's and 30's. 797-6877.

**A New Beginning**, pub mixer at Allan's Place. 522 Franklin Ave., Nutley, second and fourth Wednesdays after 9 p.m. Lite music, drinks, conversation. 661-3357 or 667-9898.

**Singles dance**, 7:30 p.m. to 12:30 a.m. Wednesdays. Springburn Manor, 2800 Springfield Ave., Union. Social, ballroom dancing. Orchestra. DJ, big band sound.

**Success Oriented Singles (SOS)** meets 8:15 p.m. the first and third Fridays of the month. For more information, call 751-1419 or 226-5999.

### Treescape exhibit at Oakeside

Treescapes by Dorothea Fischer will be shown Thursdays by appointment through Sept. 26 at Oakeside Bloomfield Cultural Center, 240 Belleville Ave.

### Upcoming class reunions listed

**Bloomfield High School, Class of 1961**, seeking class members for 25 year reunion, Sept. 26. Sheraton, Fairfield. Send info on how to be contacted to Floretta Friedman, 150 Franklin St., Bloomfield.

**Belleville High School classes of 1930 and 1931** Sept. 21. Glen Ridge Country Club, Ralph Casale, 11 Emmet St., Belleville, 07109 or Ruth Lloyd Baily, 14 Reid St., West End, N.J. 07740.

**Belleville High School Class of 1978**, November, 1986. Anthony Nicosia, 751-6474; Debbie Current, 751-8584; Kathy Gino, 429-7347; Diane DeMayo, 736-2426.

**Nutley High School Class of 1966**, Alan DeFabbio, 661-2110 or Russell Catanzarite, 661-2093.

**Belleville High School, Class of 1946** Oct. 24. Friar Tuck Inn, Route 23, Cedar Grove. The Reunion Committee, Classes of 1946, c/o Nino's Candy and Cards, 548 Union Ave., Belleville, 07109.

**Belleville High School, Class of 1966** Nov. 29, the Aspen, Parsippany, P.O. Box 666, Belleville.

**Nutley High School Class of 1956** this November. Rose Labolietta Helm, 338-8614.

**Nutley High School Class of 1941** Nov. 15. Friar Tuck, Cedar Grove. Lloyd Newsome, 65 Hawthorne Place, Montclair, 07042. 783-9162.

**Barringer High School, Newark, Classes 1940 through 1945**, mid-November. 226-5470 or 236-7386.

**West Side High School, Newark, Classes of January and June 1936** seek members for reunion. Names, addresses and telephone numbers to Guidance Dept., West Side High School, 403 South Orange Ave., Newark, 07103.

**Belleville High School Class of 1937**, looking for classmates for a 50th reunion. Call class president Frank Junie Carragher, 759-5820; Bus Gausepohl, 748-5297; Bob Shaughnessy, 759-2506 or Audrey Ural, 226-1872.

### Make-A-Wish forming here

The Make-A-Wish Foundation announces the formation of an Essex County Liaison Program and is looking for volunteers interested in helping children with terminal illnesses. Persons interested in becoming a volunteer or seeking more information about the foundation should call Michael Bushwell at 994-0100 or 992-1817. Parents or friends of children with terminal illnesses who may qualify for the program should call Flo Maciocci at 759-1708.

### Cosmopolitan Club schedule

The Cosmopolitan Association, a group for foreign born women and their daughters, meets 7:30 p.m. every second Thursday at Bloomfield Civic Center, 84 Broad St. Meetings resume in September. Associates and friends welcome as guests.

### Old Guard of Belleville meets

The Old Guard of Belleville meets the 2nd and 4th Tuesdays of each month at Fawcett Church hall, Union Ave., Belleville.

### Festival in the Park Sept. 7

The 13th annual Festival in the Park, sponsored by the Kingsland Trust and the Nutley Historical Society with the Nutley Parks and Recreation Dept., will be held 10 a.m. to 5 p.m. Sept. 7 in Memorial Park, between Vreeland Avenue and Chestnut Street. Rain date: Sept. 14. Dealers: call Douglas Eisenfelder at 667-3013 for information on renting space.

### Devils vs. firemen Sept. 24

The N.J. Devils vs. the firemen of Bloomfield, Glen Ridge and Montclair 6:30 p.m. Sept. 11 at Pulaski Park, Bloomfield. The fourth annual softball game will benefit the Mountainside Hospital Alcoholism Rehabilitation program. Tickets: \$3 at the gate. Children 8 and under free. For information, call 429-6130. Rain date: Sept. 12.

### IFW Chinese auction Oct. 19

The ladies auxiliary to Stuart E. Edgar Post 493, Veterans of Foreign Wars, will hold a Chinese auction Oct. 19 at the post home, 271 Franklin Ave., Nutley. Proceeds to the group's cancer fund.

### Bocce tournament next month

The fourth annual bocce tournament sponsored by the Carmel A. Orchio Civic Association will be held 10 a.m. Sept. 6 at Yantacaw Park, Nutley. Teams or persons interested in playing should contact Mario Carbone at 667-0896 or Mrs. Sweeney at 235-1166. Registrations will also be accepted the morning of the tournament.

### Roche flea market Sept. 27

Hoffmann-LaRoche Employees Association will run its annual flea market 9 a.m. to 4 p.m. Sept. 27 in the parking lot at Cathedral Avenue and Kingsland Street, Nutley. Rain date: Oct. 4. For more information, call 667-7048 after 6 p.m. Free parking.

### School planning family picnic

Washington School, Nutley, is planning a family style picnic Sept. 20 in honor of its 75th anniversary. Former students are asked to contact Annmarie Nicolette at 667-6824, Marilyn A. Weiss at 661-4971 or Kathy Ritaço at 235-9492.

### Pancake breakfast Sept. 21

The William Foley Football League will serve a pancake breakfast 9 a.m. to 1 p.m. Sept. 21 at the Bloomfield Civic Center, 84 Broad St. Adults, \$5; children under 12, \$2.50. For tickets, call 743-1571 or 429-8787.

### Knights, Columbiettes set trip

Bloomfield Knights of Columbus and Columbiettes are sponsoring a one day trip to the Amish country in Pennsylvania. Donation of \$33 includes bus, breakfast, three hour guided tour and supper at Good and Plenty. For reservations and more information, call Rose Ruffalo at 743-8688.

### Giant flea market at Ner Tamid

Temple Ner Tamid of Bloomfield will sponsor its 3rd giant flea market 10 a.m. to 5 p.m. Sept. 14 at the ADP parking lot on Main Avenue, just south of Rt. 3, Clifton. Rain date: Sept. 21. Over 100 dealers' free admission. For dealer reservations or further information, call 667-4829, 338-6512 or the temple office from 9 a.m. to 2 p.m. at 338-6482.

### Parent-Child Fun

**BABY GARDEN**  
New techniques in child development  
You're invited to a parent-child workshop  
on Sept. 14, 10-11:30 a.m.  
at the Garden of Eatin' in the basement of the Garden of Eatin' at 1000 N. 1st St., Newark, N.J. 07102.  
Admission: \$5.00 per person.  
Reservations: 759-1708.

**OPEN HOUSE**  
St. Peter's Episcopal  
1000 N. 1st St., Newark, N.J. 07102  
Mon. Sept. 8  
10-11:30 a.m.  
Tues. Sept. 9  
2-3:30 p.m.  
6-7:30 p.m.  
Join us for  
Exercise  
Apparatus,  
Puppets,  
Stories,  
Music and much more!



**garden**

...what a way to grow!  
Call for free brochure 944-7570

**BELLEVILLE - KEARNY  
OBSTETRICS - GYNECOLOGY**

**HOWARD GRODER, M.D.  
JEFFREY ROSEN, M.D.**

**HIGH RISK PREGNANCY  
INFERTILITY**

Clara Maass  
Professional Building  
5 Franklin Avenue  
Belleville, N.J. 07109  
759-0700

Arlington  
Medical Building  
837 Kearny Ave.  
Kearny, N.J. 07032  
991-1519

"Serving The Community For 40 Years"

### Car show, flea market Sept. 7

An antique car show and giant outdoor flea market and craft show will be held Sept. 7 at Mgr. Owens Memorial Park, Park Ave., Nutley. Over 150 dealers. Benefit for Nutley Elks Crippled Children's Association. For more information, call Jay at 991-4856 or 997-9535.

### Medical assistants meet Sept. 10

The Essex Chapter of Medical Assistants will meet 8 p.m. Sept. 10 in the Doctors' Lecture Hall at Clara Maass Medical Center, Belleville. Marie Andreozzi will speak on billing and collections for the medical office. Health care workers and interested persons invited. For membership information, contact Jennifer Masson, CMA, Theresa Grotta Center for Rehabilitation, 20 Summit St., West Orange, 07062.

### Roche Retirees meet Sept. 13

Roche Retiree Club will meet 1:30 p.m. Sept. 13 in building 76 auditorium in the Roche complex. A singing duo, The Skylines, will present a variety of music including Broadway show tunes.

### IFW Post picnic Sept. 14

Belleville Younginger-Alden Jr. Post 275, 17 Belleville Ave., is planning a picnic 1 p.m. Sept. 14. \$9 for adults, \$5 for children under 11. Clam chowder, clams on the half shell, baked chicken, hamburgers, hot dogs, corn on the cob, salad, watermelon, coffee, cake, draft beer and soda. For tickets call 751-4026 or 759-9651 after 6 p.m.

### Modern dance classes at church

Grace Episcopal Church, Highfield Lane, Nutley, is sponsoring a series of modern dance, ballet and creative dance classes for children beginning Sept. 15. Call the church office to register. Judith Burwell, former director of the National Ballet of Honduras, is the instructor.

### Casting for 'Miracle Worker'

Open casting for "The Miracle Worker" will be held 7:30 p.m. Sept. 4 and 12:30 p.m. Sept. 6 by the Barns Museum Workshop at Clifton High School, Colfax Road. Performances Nov. 7 and 8.

### Fish and chips served Sept. 12

Combini Missionary Fathers (Verona Fathers) will serve fish and chips 5 to 7 p.m. Sept. 12 at St. Aloysius Hall, Bloomfield Ave., Caldwell. Donation: \$5.50 per person. Benefit of drought victims in the Sudan. For ticket information, call 744-8080 or 744-7748.

### Dessert, card party Oct. 16

The Lions Auxiliary of the Nutley Lions Club will hold its annual dessert and card party Oct. 16 at the Nutley Elks Club, Chestnut St. Proceeds will benefit the eyesight program. For tickets or information, call Gloria at 667-7089.

### Woman's Club card party Sept. 22

The Woman's Club of Nutley will hold a card party 1 p.m. Sept. 22 at the clubhouse, 216 Chestnut St. Tickets \$3. Proceeds to scholarship fund.

Perming      Haircutting

## Elaine's Hair Designs

148 Little St.  
Belleville, N.J.  
**759-9039**  
Open Tues. - Sat.      electrolysis

### Welcome to TOTAL IMAGE



### KATHY CORSI

Stepping Up To The

**TOTAL IMAGE SALON Corporation**

Kathy has 9 years hair cutting experience in the Nutley area. She will be at our location in Nutley when not traveling throughout the U.S. with the Total Image Hair Cutting Team.

549 Franklin Avenue • Nutley  
235-9299

### Paul A. Caputo D.P.M.

General and Surgical Care of the Foot  
is pleased to announce

### SATURDAY HOURS

Beginning September 6, 1986

345 Washington Avenue  
Belleville, N.J. 07109  
759-6560



# Summer's Last Cookout

Look for our colorful flyer in your newspaper, in your mail or pick up your **FREE** copy at Grand Union this week (while supply lasts).

U.S.D.A. Choice - Boneless Beef  
**Sirloin Tip** for London Broil  
or Steak  
Lb. **189**●

Natural or Clear  
**Red Cheek Apple Juice**  
Half Gal. Cont. **139**●

U.S.D.A. Grade 'A' Fresh  
**Chicken Leg Qtrs.**  
with Portion of Backs  
Lb. **59**●

Solid White - In Oil or Water  
**Chicken of the Sea Tuna**  
6.5-oz. Can **89**●

Assorted Patterns and Colors  
**Scottowels Big Roll**  
124 Sheet Roll **69**●

Thompson - White  
**Seedless Grapes**  
Lb. **79**●



**Super GRAND UNION Coupon**  
M. Dew Regular or Diet Orange or Lemon Lime Slice  
Regular or Diet Pepsi Free Pepsi Light or  
**Pepsi or Diet Pepsi**  
One 2 Liter-Btl **79**●  
No Minimum Purchase Required With This Coupon. Good Aug. 31 thru Sept. 6, Limit One Coupon Per Customer.

**Super GRAND UNION Coupon**  
Grape Jam or  
**Smucker's Grape Jelly**  
One 7-lb. Jar **69**●  
No Minimum Purchase Required With This Coupon. Good Aug. 31 thru Sept. 6, Limit One Coupon Per Customer.

**Super GRAND UNION Coupon**  
Prints  
**Coronet Bath Tissue**  
One Pkg. of 4 Rolls **69**●  
No Minimum Purchase Required With This Coupon. Good Aug. 31 thru Sept. 6, Limit One Coupon Per Customer.

## THE BUTCHER BLOCK

## PRODUCE

## GROCERIES

Not Less Than 90% Lean  
**Diet Lean Ground Beef**  
Any Size Pkg. Lb. **189**●

Super Trim - Hickory Smoked  
**Shank Portion Smoked Ham**  
Water Added Lb. **119**●

Fresh - All Natural  
**Snow White Mushrooms**  
12-oz. Pkg. **99**●

Assorted Flavors  
**Pillsbury Plus Cake Mix**  
18.5-oz. Pkg. **79**●

Reg. Unsalted  
Sour Cream & Onion or BBQ  
**Lay's Potato Chips**  
7-oz. to 6.5-oz. Pkgs. **89**●

## GRAND UNION



## PHARMACY DEPT.

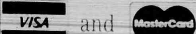
**Your health needs are our main concern!**

Grand Union's computerized Pharmacy means...

Of course we have all the brands and generics dispensed by our licensed pharmacist, but you'll be on our computer, too. Your medicinal record and needs will be available at a button's touch, for safe reliability. Convenient? Drop off your Rx at The Pharmacy before you shop, it'll be ready when you are. Senior citizens (62 years of age or over), are eligible for prescription discounts of 10% off.

We honor major third party insurance prescription plans.

We gladly accept



- Drug Interaction screening
- Drug Allergy screening
- Complete patient prescription history.
- Year-end medical expense summary.



354 Main St. & Joralemon Ave.,

# Belleville

# GRAND UNION

### PHARMACY HOURS:

Monday thru Friday  
9 A.M. to 9 P.M.  
Saturday 9 A.M. to 6 P.M.  
Sunday 9 A.M. to 2 P.M.  
**DIAL 751-0666**



**MOST GRAND UNIONS ARE OPEN 24 HOURS**  
CHECK YOUR LOCAL GRAND UNION WINDOW SIGNS FOR EXACT 24 HOURS

Only The Best Always For Less

Not Responsible for Typographical Errors We Reserve The Right To Limit Quantities For Store Information. Call Toll Free, 1-800-221-1835 Prices and Offers Effective Sunday, Aug. 31 thru Saturday, Sept. 6, 1986.

## GRAND UNION PHARMACY DEPT.

# 25¢ Off

With This Coupon And Purchase Of One Container

Your Favorite Brand Shampoo or Conditioner  
Coupon Good Aug. 31 thru Sept. 6, Limit One Coupon Per Customer

## GRAND UNION PHARMACY DEPT.

# 25¢ Off

With This Coupon And Purchase Of One Can

Your Favorite Brand Hair Spray  
Coupon Good Aug. 31 thru Sept. 6, Limit One Coupon Per Customer

## GRAND UNION PHARMACY DEPT.

# \$4.00 Off

Toward the Purchase Of Any

New or Transferred Prescription  
Coupon Good Aug. 31 thru Sept. 6, Limit One Coupon Per Customer

## GRAND UNION PHARMACY DEPT.

# 50¢ Off

With This Coupon And Purchase Of One Btl. - 100 Plus 30 Free

Theragran M Vitamins  
Coupon Good Aug. 31 thru Sept. 6, Limit One Coupon Per Customer

# Belleville Times SPORTS

## Buc Shots

By Michael Lamberti



Winning football was synonymous with Belleville High during the 1983 and '84 campaigns; however, the team suffered its first losing season last year, when the young Bucs posted a 2-7 record and were shutout six times.

In 1983, the Bucs were favored by many to do well. The '82 Bucs, as mentioned last week, were 8-2 and earned a post season playoff berth. The '83 team was expected to have another productive season and the Bucs did not disappoint its followers.

The Bucs posted a 6-3 season, winning its final three games after a mid-season slump. The story of the '83 team was a big running back named Mike Murphy. The senior rushed for over 1,000 yards for the second straight season, breaking the mark in a 27-0 rout of Hackensack in week eight.

Mark Walsh, a junior, was the quarterback and Billy Baber was a fine running back. The Bucs started the '83 season with a 12-6 win over Nutley, the first time ever, that the Bucs and Raiders had opened a season against each other.

The victory over Nutley was the sixth straight for Belleville, dating back to 1978. In week two, Belleville traveled to Bloomfield for the first time since 1976 and came home with a 14-6 victory. The Bucs suffered its first loss in week three, losing to Montclair in a hard fought game, 14-6.

The 1983 season was the second for the Bucs in the NNJHL, however, the league was realigned that season and Belleville was put in a different division, with Hackensack, Teaneck, St. Joe's of Montvale, Passaic and Ridgewood. Other than Passaic, the alignment made little sense, geographically. Luckily, the NNJHL realigned in 1984 to its original format.

Anyhow, the Bucs routed Teaneck, 33-0 in week four, with Murphy gaining 99 yards rushing. With a 3-1 record, Belleville was favored to beat Ridgewood and set the stage for another memorable Buc-Passaic battle, this time at Passaic. The '83 Indians had a senior running back named Craig Heyward, who was lighting up the scoreboard with scoring and rushing records.

Perhaps Belleville was looking ahead to Passaic, or the Bucs just misjudged Ridgewood's talent. Whatever the case may be, the Bucs lost in the closing minutes to Ridgewood, 20-14. This was a game in which Walsh scored the go ahead TD on a three yard run to give the Bucs a 14-12 lead. It appeared the team was on its way to victory.

However, Ridgewood rallied in the final three minutes and won it with a late touchdown, giving the Bergen County school a big victory.

With its record at 3-2, Belleville and Passaic battled in week six, with Passaic looking to avenge the famous 3-2 loss it absorbed to Belleville in 1982.

The Bucs scored first in this game, with Murphy breaking free for a ten yard TD. However, Heyward answered on the next Passaic offensive series, with a 74 yard run to tie the game.

Ironically, it was the only TD that Heyward would score against Belleville in his illustrious four year career. That's quite an accomplishment for the Buccaneer defense, considering that Heyward won two straight state scoring titles.

The Indians pulled away in the second half, won, 28-7, capping the game when Nate Heyward ran 99 yards off scrimmage for the final tally.

Belleville, with a 3-3 record and eliminated from playoff competition, rallied in its final three games to beat St. Joe's, 30-6 Hackensack, 27-0 and Kearny, 28-6 on Thanksgiving Day.

The 1984 season was one of ups and downs. The Bucs won its opener that season, beating Don Bosco on the road, 14-0. Mike Gibbons, the Bucs fine running back, scored the games final TD in the waning minutes. Joe Gizzo scored the first on a fumble recovery turned into a TD.

Belleville was shutout by Bergen Catholic, 21-0, in week two, but the loss seemed to inspire the Bucs as they rallied in weeks three and four to beat Eastside, 26-0 and Bloomfield, 36-6.

The next two weeks turned out to be two of the most exciting weeks in the season. Belleville battled Passaic at home and Clifton on the road, knowing full well it needed both games in order to compete for the NNJHL crown and possible playoff berth.

The Bucs did the job, beating Passaic, 7-0, then upending Clifton, 7-3 on the road, boosting the team record to 5-1. The victory over Passaic was especially big, because the Indians had not lost a game since Thanksgiving Day of 1982. Passaic had managed some incredible winning numbers from 1979-84, losing just five regular season games during that period. Belleville had administered four of those defeats, with Montclair managing the Thanksgiving Day win in '82.

The Bucs boosted its record to 6-1 by beating Kennedy, 19-7, but the victory proved costly as five varsity starters went down with injuries. The Bucs had earned a playoff berth with the win over Kennedy, so the loss to Montclair, 28-0 the following week, wasn't that important. However, the wounded Bucs were no match for Union in the playoff game, losing 42-0. In the Thanksgiving Day game, with Nutley, Belleville needed a victory to assure an NNJHL title and a 7-3 final record. However, it wasn't meant to be, as the Raiders surprised the Bucs with a 19-6 win. Belleville thus finished 6-3 in regular season play, 6-4 including the playoffs.

The players and fans all know about last season's 2-7 campaign. The Bucs posted victories over Eastside, 12-0 and Bloomfield, 24-6. However, the team lacked experience and

## This year's Bucs may gain over last year's 2-7 season

When John Senesky took the job as head coach of Belleville football in 1977, he instituted a series of tests to determine the fitness of his prospective players before the start of contact practices.

Those tests were called the "decalathlon" and over the past ten seasons, it has become a barometer to determine the amount of work the players put in during the summer months in preparation to the upcoming season.

If this year's results are any indication of how well the team will fare when the regular season commences on September 27, then watch out. The Belleville Bucs are entering the '86 campaign with a vengeance.

"I can't remember a year when our players were in such good condition," said Senesky. "The kids tested tremendously well in the decathlon. We, the coaching staff, are very pleased."

To say the team tested well is an understatement. The decathlon is a series of ten events to test the athletes' strength and endurance. An overall score of 1,000 is considered excellent. In the past, a good decathlon would place three, maybe four, players at the 1,000 point or higher mark. Last season, the Bucs did not have one player reach the 1,000 point plateau. In 1984, two players, John Apicella and Steve Kimble made it.

Incredibly, nine players broke the 1,000 point mark this year,

led by junior Jay Marchese, who set a new Buccaneer record with a phenomenal 1,112 points.

Eight others broke 1,000 and it should be noted that the players who achieved the mark were members of the '86 team that went 2-7. Needless to say, the Buccaneers have been working to regain that winning edge.

In addition to Marchese, the other 1,000 point scorers were: Lou Lucante (1078), Jaime Galato (1073), Dawson Bloom (1070), Joe Delle Monace (1032), P.J. Grande (1030), Jeff Spitsbury (1025), Craig Jackowski (1012) and John Cerza (1010). Cerza is a sophomore who trimmed down some 30 pounds and is vying for either a lineman or linebacker position.

To top off that list, 18 athletes broke the 900 point barrier, also a difficult task. Last season, seven players broke the 900 mark.

The 900 plus club members for 1986 are: Daniel Senesky, Michael Senesky, John View, Joe Dominick, John Napolitano, Kelly Simpson, Vincent Voller, Mike Di Biasi, Mario Lemongel, Donald Tuosto, Jerry Padula, Steve Reilly, Gerard Carbo, Jon Paul Lenczuk, John Mgr, Frank Pacheco, Paul Gleason and Gary Villano.

In the power index, which measures a player's strength as compared to his weight, more tremendous figures were turned in.

A few years back, if a player broke 5.0 it was considered excellent.

Now, said Senesky, "we're getting consistent performances

in the 5.0 range. Players are working out more with weights than in the past."

Joe Dominick set a new team record in the power index with a marvelous showing of 7.4 overall. Dominick, who weighs 130 pounds, cleaned 160 pounds, push pressed 175 pounds, squatted 365 pounds and bench pressed 250. Dominick, a senior, led a host of players who turned in excellent performances.

10 players finished with scores of 6.0 or higher while another 29 finished at 5.0 or higher.

Last season, three players finished at 6.0 or higher while 19 players finished with 5.0 or higher.

The '86 members for 1986 were: Lucante, 6.5, Delle Monace, 6.0, View, 6.1, Galato, 6.0, Marchese, 6.5, Pacheco, 6.4, Tuosto, 6.3, Bloom, 6.0, Napolitano, 6.2 and Mike Senesky, 6.5.

It's quite obvious that the players have put in the critical time during the off season to get ready for the '86 season.

"They remember last year," Senesky said. "The attitude is good. That hunger is back. They want to win. Winning became a way of life around here for a while and it seemed like it was expected. I think last year woke them up."

In 1985, the Bucs fielded a young team and finished 2-7, having been shutout in its final five games and six times overall.

The Buccaneers' first scrimmage of the '86 campaign is this Saturday, when the team travels to Bergen Catholic for a

10 a.m. start. It will be a tri scrumage, involving Belleville, Bergen Catholic and Mt. St. Farrell of New York. Bergen Catholic is now coached by Bill Rocca, the former head coach at West Essex, who led his team to a state title in 1980 by defeating Belleville in the finals.

The Bucs scrimmage schedule continues on September 13, with a game at Columbia starting at 10 a.m. The following two scrimmages will be versus Morris Knolls and Livingston, however a date and time for those two matches has not been set as yet.

Belleville started practice last week with the decathlon and moved to double sessions last weekend. After Labor Day, the team will begin daily practices, leading up to the start of the regular season.

The Bucs open the '86 regular season with a road game in Paramus on September 27. Five days later, in a rare Thursday night encounter, the Bucs host Ridgewood at 7:30 p.m. start.

"We'll have a tough schedule," Senesky said, referring to the usual battles with Montclair, Passaic, Clifton, Nutley and the other tough teams from the NNJHL. "We're off to a good start with the conditioning. Now, we'll get a chance to see the players in the scrimmages and begin to determine positions."

The third annual Picture Day for all Belleville fall sports will be held this Sunday, at 11 a.m. from Municipal Stadium. It will be a good chance for families and fans to take pictures of their favorite teams and players.



**Bocce champions** — Jim Corino of Belleville (l.) is in good company at the Sambuca Romana Tri-State Bocce Championships in New York City late last month, along with partner Enzo Sangiorgi (2nd from left). They were barely nosed out by the ultimate first place winners, Donato

Romano (1) and Roberto Vazquez, Corino and Sangiorgi had been among the winners of the N.J. eliminations of the Sambuca Romana, held July 19 at Landells Park, Lyndhurst.

## Fall sports have center stage now...

School officially commenced yesterday at Belleville High for the 1986-87 school year and with it, another sports season is underway. Fall sports have center stage now and while most coaches have not begun practices as of Labor Day, they are making preparations for what they hope will be a successful campaign.

Football coach John Senesky held his annual decathlon last week and the results were eye-popping. A related article concerning the results appears in this week's edition. The Bucs have been working hard all summer long in anticipation of the '86 season. The players have dedicated themselves to improving on last year's 2-7 campaign. Based on its scores in the conditioning programs, it appears the team is on its way to a good campaign.

The Bucs open the regular season on September 27, with a game in Paramus.

Grace Worley began practice for her volleyball team last Tuesday morning.

"I don't know that much, now," the coach said last Monday night. "I'm hoping to have the kids who finished the season as underclassmen last season. A lot of the girls went to camps during the summer, so they should be ready."

Worley's team has made it to the state semi-finals the past two seasons and the coach is optimistic that her team can match that success, if not improve upon it.

The volleyball team opens its 1986 season on September 19.

Karen Fucello is back for her tenth season as tennis coach.

Fucello, who also coaches basketball and track, isn't quite sure what to expect when prac-

tice started yesterday.

"We have some strong players coming back," she said, "but we'll have to rely on some of the younger kids to fill some big positions. Hopefully, the girls have been working on their game during the summer."

The tennis team begins play on September 17.

Ray Tannuzzi begins his third year as gymnastics coach at Belleville High. Last season, he coached the girls to a 4-1 mark, the first winning campaign in the program's history. The team has a strong nucleus returning from the '85 team.

"I really don't know what to expect," the coach said. "We have some good athletes on the team. From what I can see, the turnout should be pretty good."

I'll know more when we get started tomorrow (last Tuesday morning)."

Tannuzzi is hoping to have an

assistant coach on the team this fall. The job has been posted, but as of press time it was not filled.

With the growing interest in the sport, an assistant coach would be of great benefit to the program.

John Tosato will return to the cross country team this fall and Tony De Aquino will lead his troops on the soccer field. Tosato will have some experience in the cross country lineup and De Aquino, as usual, will field a tough, well drilled soccer team that will look to battle for conference honors.

Full coverage of the respective sports will commence in next week's issue. The games and matches will begin in mid-September, so the teams won't have that much time to gear up.

It should be an exciting campaign for the respective teams.

Belleville Times



# Flashback! 1982 BHS Soccer

This weeks Flashback takes us to the 1982 soccer season at Belleville High. The '82 Bucs boosted its season record to 300 with two victories and a tie including a win over Orange in the prestigious Essex County tournament. The '82 team was a young unit, which finished 8-9-3 on the regular season. The following campaign, the Bucs would set a team record for most victories in a season. Tony De Aquino was, and still is, the teams head coach. This article appeared in the October 21, 1982 edition. Mark Foley wrote the article.

The Belleville soccer team not only brought its record back to 500 last week, it also gained a

berth in the quarterfinals of the prestigious Essex County Soccer Tournament by defeating Orange, 2-1, on Sunday. Senior Mike Vega led the scoring with a goal and an assist.

Orange struck first, with John Datus putting one past junior Brian Cook at 4:07 of the second quarter. It didn't take long, however, for the Bucs to strike back. Only 1:18 later, striker Ron Coco converted Vega's pass to tie the score at 1-1. It remained that way until 12:35 remaining in the match, when junior Santiago Borja blasted a shot at Orange keeper Gregory Liverpool, which the goalie stopped, but the rebound caromed to Vega, who neatly put the ball

into the corner.

The squads week began last Monday against Queen of Peace with a 2-2 tie. Mike Van Emburgh opened the scoring with a booming 20 yard shot from a direct free kick in the first quarter.

However, Q.P.'s John Cicchino responded with a penalty kick at the 19:06 mark of the second quarter. The Queensmen took the lead in the third when an unidentified player, carrying the ball into the left corner, hit a cross that rolled through the goal before being accidentally knocked into the net by a Belleville defender. It held up for only 39 as Vega headed a Borja cross past goalkeeper Al Cross with only 3:31 to go in the game.

The next day they headed to Montclair and soundly downed the Mounties, 4-1, as Coco netted the first hat trick of the season for the Bucs. Cook stopped 14 shots and senior Bob Kane had four, allowing the only score on a penalty kick late in the match.

On Friday, the Bucs were handed its only loss of the week, 1-0, to the Bengals of Bloomfield. Despite several excellent chances in the fourth quarter, they were unable to score on keeper Chet Andracka, whose 11 saves matched the total notched by Cook. And, although Bloomfield had 30 shots, its goal came halfway through the fourth quarter when Jim Sharp crossed a ball that went through Cook's hands and was pounded into the

top of the net by Jim Rizzo.

On Monday, the Bucs battled Paterson Eastside to a 1-1 tie as Van Emburgh nailed a corner kick with less than 10 minutes remaining in the game. The tie placed the team record at 5-5-2 going into this weeks action.

Yesterday, the Bucs played host to Passaic Valley and tomorrow, Nutley will pay a visit. On Sunday, they will go to South Orange for the 1-30 quarterfinal match versus highly rated Columbia. Next Tuesday, the Bucs will play at Passaic.

**EDITORS NOTES:** Bucs finished 7-7-2 in the NNJIL in 1982, good enough for third place in the league, trailing only Paterson, Kennedy and Clifton. Santiago Borja led the team in scoring with 10 goals and 15 as-

sists for 25 points. Other players who excelled for the team were Rick De Frano, Don Di Benedetto, Bob Kane, Kevin Tice, Dom Diaco, Mike Silletti, Mike Vega, Luky Silletti, Carlos Kingalaha, Ron Coco, Joe Hulley, Larry Ottenstroer, Jamie Lijo, Freddy Calvache and Karl Hauschild. Kingalaha had his season cut short with a leg injury in the Nutley game and missed the next 15 games. The Bucs highlight in '82 was beating powerful Nutley twice, including a 4-3 win at Belleville when the Bucs rallied from a 3-1 deficit with Coco scoring the winning goal after Borja tallied twice to tie the game. In the first Nutley game, the Bucs won 1-0 on an overtime goal by Kingalaha. Coco finished with 6 goals and 3 assists for 15 points in '82.

## Keykuren wins decathlon

The Belleville Recreation Department's annual decathlon was held with Nick Keykuren emerging as winner in the Senior division. Frank Van-Syckle and Joe Cucuzza as the runner-ups.

In the Junior division Kenny Johansen prevailed as the winner with Jerry Turi and Jimmy Landon as the runner-ups.

At Number Ten School playground wiffleball was the main event with Kevin and Kevin Johansen, Mike Mundy and Anthony Fetch participating. A birthday celebration was held for Ben Talamini with Ben receiving such presents as "Gummy".

Thursday was the annual pizza party with Michael Prosperi, Mike Dandane, Keith Veltry, Mike Mundy, Anthony Fetch and the Johansen Brothers participating. Others participating at Number Ten School playground were Ben Webster and Oliver Hardy.

At Kelly's Court a push-up contest was held with Jerry Lamana beating all comers. Joey Figueroa was the winner in carroms this week.

At the Stadium this week a director's softball game was played with the directors prevailing over the recreation senior boys team by the score 9-7.



Bocce Tournament - Mario Carbone (l) and Essex County Sheriff Thomas D'Alessio (r), both of Nutley, are this year's chairmen of the Carmen A. Orechio Association Bocce Invitational Tournament. The state senator and Nutley commissioner is also pictured above. The contest, open to the public free of charge, will be held at 10 a.m. this Saturday, Sept. 6 in Yantacaw Park. Rain date is Sept. 14. (Photo by Kara Laczynski)

## BUC SHOTS

(Continued from page 11)

the offense had trouble scoring against the powerful NNJIL teams. The defense did a nice job, but the Bucs suffered a difficult campaign.

The early signs look good for the '86 team. You can read more about this years squad in a related article in this weeks edition. Good luck to the coaches and players as a new season gets under way.

### Last Weeks Quiz

In the Giant-Jet rivalry, there is one shutout on record, a 10-0 Jet win in 1977 in a pre season game. Richard Todd quarterbacked the Jets and Norm Sneed, the Giants.

### For This Week:

When the University of Pittsburgh captured its NCAA football championship in 1976, the Panthers defeated a powerhouse in a major bowl game to finish the campaign undefeated. Name the team that the Panthers beat for the title and the Bowl game where it was accomplished.

## We Do Windows



Thanks to the advanced technology of CertainTeed's patented development of extruded vinyl replacement windows, we can outperform wood, and we do them right - with virtually maintenance-free solid vinyl windows that feature insulated glass to greatly reduce energy loss. Phone us for more details.

**CertainTeed**



**PURA-TEX CORP.**

191 Belleville Ave.  
Belleville, N.J. 07109  
759-2200

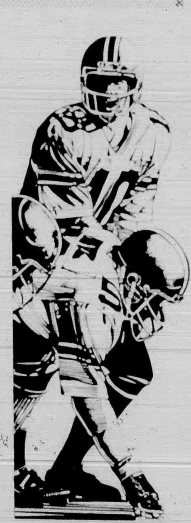
**7 WAYS TO REDUCE YOUR AUTO INSURANCE COST!**  
Stop in with your auto insurance policy and let us show you how! Our computer is programmed to search for the best coverage at the lowest cost to suit your needs.  
**HERE TODAY... HERE TOMORROW**  
serving the area since 1952  
**HARVEY KRAMER AGENCY, INC.**  
INSURANCE  
475 Washington Avenue, Belleville 201-751-1266

**BULLET HOLE**  
Long - Short - Handing - Sporting Equipment  
  
Collector Guns  
Buy - Sell - Trade  
238 Washington Ave.  
Belleville, N.J. 07109

**IS YOUR BOILER SICK ?**

Plumbing & Heating  
Boilers • Water Heaters  
Burners • Baseboard  
**WEIL-McLAIN**  
HIGH EFFICIENCY

For Prompt Service Call  
**PAR ENERGY**  
9-11 Anthony St. Newark, N.J. 07107  
**485-6404**  
Residential • Commercial • Industrial  
100% Financing E-Z Credit Terms



**Jazzercise**  
**FREE JAZZEXERCISE FOR TWO, OR TWO TRIPS JUST FOR YOU.**  
Offer expires 10-30-86  
201-235-9039

# Every car we sell gives us a chance to strut our stuff!

**1986  
STOCK  
CLEARANCE!**

## Brand New 1986 Chevrolets - Buy, Lease or Finance

See how low our prices are - see how big our selection is - see how great our service is!



### NOVAS!

Blue 4-Dr Sedan, w/std. 1.6L 4-cyl engine, 5 speed manual overdrive trans, power disc brakes, manual rack & pinion steering, front wheel drive, and more! Stock No. 6555, List \$7941. Total payments \$7290.24

**\$151<sup>88</sup>**

per mo. **IN STOCK!**

**25  
MORE  
TO CHOOSE  
FROM!**

**2.9%  
FINANCING**  
or  
**CASH REBATES**  
up to **\$1,000!**

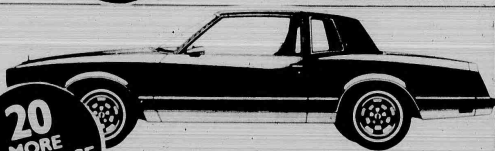
### MONTE CARLOS!

White Sport Coupe w/std. pwr steering & brakes & opt. air cond, auto trans w/OD, 5 liter V-8, pwr locks & windows, AM/FM stereo, white whl. cover w/locks & more! Stock No. 6549, List \$13,649. Total payments \$12,042.24

**\$250<sup>88</sup>**

**IN STOCK!**

**20  
MORE  
TO CHOOSE  
FROM!**



### VANS!

Astro Cargo Van w/std. man steering & brakes and opt. 4.3 liter EFI V-6, 4 speed auto trans, hvy duty shocks, aux. lighting, 1700 lb. payload, 2-person seating, am/fm stereo, etc. Stock No. T-987, List \$10,865. Total payments \$8010.24

**\$199<sup>88</sup>**

per mo. **IN STOCK!**

**20  
MORE  
TO CHOOSE  
FROM!**



### CAMAROS!

Bright Blue Metallic Sport Coupe w/std. pwr steering & brakes & opt. 5 liter V-8, auto trans w/OD, pwr locks/wind-downs/hatch release, spoiler, AM/FM stereo w/cassette & pwr antenna. Stock No. 6508, List \$14,022. Total payments \$12,330.24

**\$256<sup>88</sup>**

**IN STOCK!**

**12  
MORE  
TO CHOOSE  
FROM!**

**WE HAVE  
IROCs!**



## Crown's Suburban-Traded Cars

#### '85 CAMARO \$9988

CHEVY, 2-Dr. dk grey, 6-cyl, auto trans, pwr steering/brakes/wind, air cond, rr defrost, stereo, 9841 miles.

Sharp!

#### '85 CUTLASS \$8988

OLDS, 4-dr, 6-cyl, auto trans, pwr steering/brakes/wind/locks, air cond, rr defrost, stereo, tilt, cruise, 18,708 miles.

Flawless condition!

#### '84 IMPALA \$7988

CHEVY, 4-dr, 6-cyl, auto trans, pwr steering & brakes, air cond, rr defrost, stereo cassette, 22,118 miles.

A real beauty!

#### '84 WAGON \$7988

CHEVY CELEBRITY, black, roof rack, 6-cyl, auto trans, pwr steering & brakes, air cond, rear defrost, stereo, 17,923 miles.

Showroom new!

#### '83 Century \$7988

BUICK, 2-tone, 4 dr, 6 cyl, auto trans, pwr steering/brakes/wind, air cond, rr defrost, stereo, 52,631 miles.

Stock No. 2906R.

Excellent condition!

#### '82 CITATION \$4288

CHEVY, 4-dr hatchback, 6-cyl, auto trans, pwr steer & brakes, air cond, rear defrost, stereo, 40,068 miles.

Great MPG!

#### '82 GRAND PRIX \$5988

PONTIAC, 2-dr red, stereo, air cond, rear defrost, pwr steering & brakes, auto trans, 6-cylinder, 56,222 mi.

A real beauty!

#### '82 MONTE CARLO \$5988

CHEVY, 2-dr, light red, 6 cyl, auto trans, pwr steering and brakes, air cond, rr defrost, am/fm stereo, 45,693 miles.

Super sharp!

#### '82 BONNEVILLE \$6488

PONTIAC, 4-dr, 6-cyl, auto trans, pwr steering & brakes, air cond, rr defrost, stereo, 52,612 miles, Stock No. 3051P.

Fabulous cond!

#### '82 LYNX \$3988

MERCURY, 4-dr, 4-cyl eng, auto trans, pwr steering & brakes, air cond, stereo, 47,159 mi.

Purrrfect!

#### '81 DELTA 88 \$5988

OLDS, 4-dr, V-8, auto trans, pwr steering/brakes/seats/wind/locks, air cond, stereo, rear defrost, 42,636 miles.

Terrific!

#### '81 JETTA \$4288

VOLKS, 4-dr, 4-cyl, 5-spd, man trans, man steering & brakes, air cond, rr defrost, AM/FM stereo, 54,730 miles.

Great MPG!

#### '81 WAGON \$2588

FORD ESCORT, blue, 4-cyl, 4-spd man trans, pwr steering & disc brakes, air cond, rear defrost, AM/FM, 60,216 miles.

Must see!

**VISIT  
THE NEW  
CROWN  
TRUCK  
CENTER!**

**OVER  
250  
CARS &  
TRUCKS  
TO CHOOSE  
FROM!**

**SAME  
DAY  
DELIVERY  
GUARAN-  
TEED!**

**NO  
GIMMICKS  
NO HIDDEN  
CHARGES**

Every car is in stock, ready for immediate delivery. No need to wait for weeks... The car you see is the car you get.

Every price includes freight and prep, excludes tax and MV Fees.

**100%  
FINANCING**

Qualified buyers can finance the entire purchase of their car at Crown with no money down and up to 48 mos. to pay! Credit arrangements made on premises. You can even call ahead for credit O.K.

**759-2124**

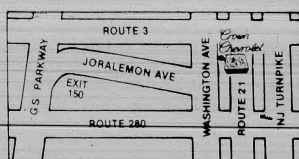
# Crown Chevrolet

New Jersey's Chevrolet Underpricer

514 Washington Avenue, Belleville (201) 759-4200

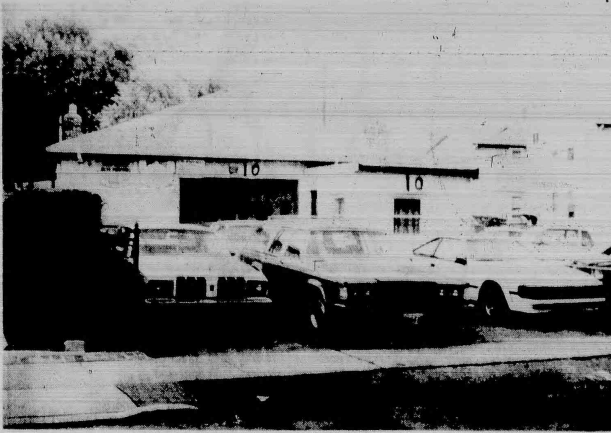
2.9% financing for 36 mos. on every 1986 Chevrolet. Or cash rebate on purchase up to \$1,000 for Corvettes, other rebates on other models. Expires 10-8-86.

Advertised payments are for 48 mo. closed end leases.





# Residents cite body shop woes before township, state officials



UNDER FIRE... from neighbors is this Oakwood Avenue, Belleville, body shop. Residents complain of long hours of spray painting and use of the street for car repairs.

## Essex sheriff is 'paisano' to visiting Italian students

A group of Italian exchange students, who just completed a month long visit to America, got a taste of our criminal justice system in action thanks to the help of Essex County Sheriff's Office.

The 26 students, all high school or college students, are sponsored by "Interstudy," a California based organization. They were among twenty-six groups of students from Europe and Asia who were spending the summer studying in New Jersey.

The students were guests of families from nearby Montclair.

### Federal \$9,950 grant to study DWI in state

The New Jersey Division of Motor Vehicles has awarded a federal grant of \$9,950 to the Bureau of Economic Research at Rutgers University to fund a study concerning the effects of the State's DWI programs on alcohol-related traffic fatalities.

Among the projects to be evaluated in the study are SBDR programs, drunk-driving task forces, county DWI and municipal DWI checkpoints, and changes in the drinking age.

and Glen Ridge. Our Lady of Mount Carmel parish gave classroom space for their daily English language lessons. Essex County Sheriff Thomas J. D'Alesio brought the students to visit the county Sheriff's Office in neighboring Newark where they toured the criminal identification bureau and talked with detectives.

Sheriff D'Alesio also arranged for the group to visit a courtroom where Superior Court Judge Frances Cocchia gave the students some insights into the American criminal justice system. The students were impressed with the fact that female judges were serving on the bench, which is a rarity in Italy.

Sheriff's Office also escorted the students on a field trip to Liberty State Park and the Statue of Liberty. During their month long stay, the group also visited Washington, D.C., New York City and Boston.

An Essex County Sheriff's Office officer, who specializes in narcotics, presented a program for the students about the current drug abuse crisis affecting young people and the types of intervention and prevention measures being used to combat it.

The "Interstudy" program is currently in its seventeenth year of bringing foreign students to America to study our culture and to improve their conversational ability in English.

By Karen A. Lynch

About 30 residents of Oakwood Avenue and the surrounding area came to a backyard meeting Thursday evening to listen to possible solutions to their complaints about a nearby auto body shop.

The meeting hosted by Jean Gerardo of 10 Oakwood Ave. was convened by Councilwoman-at-large Louise Palagano. Speakers included Police Lt. Terrence McGrath, Richard Proctor, health department director, Belleville health officer Thomas Longo, and Michael Papp, supervising engineer for the State Department of Environmental Protection.

Since 1981 Remo's Auto Body Shop of 10 Oakwood Ave., Belleville, has been the subject of complaints from neighboring Bloomfield and Belleville residents. Neighbors allege damage to property and health from paint spray fumes. They also say employees change the oil and give repair estimates on cars parked in the street in front of their homes — cars they claim hinder the efforts of street sweepers.

In addition, neighbors have charged that owner Remo DiPollo has, at times, sprayed for as long as six consecutive hours, often with the spray room door open, in violation of a DEP permit that permits spraying for one hour per day with the door closed.

However, Bloomfield's authority to deal with residents' concerns is limited, since the shop is in Belleville.

Early in 1985, DEP installed a carbon-absorption filter designed to stop emission of fumes past Remo's property line. Complaints about the business were heard in Belleville Municipal Court and dismissed Feb. 14 the same year, and a report indicates the equipment was operating satisfactorily at that time.

But a subsequent policy change of the state Attorney General now permits DEP processing of violations if an inspector can verify a complaint and trace it to its source, and if the complaint signs an affidavit. Papp said.

Papp said he will seek to make it a condition of Remo's permit that odors cannot leave the shop property line. Violations of that condition could result in a fine of \$200 for a first offense that doubles on each subsequent offense to a maximum of \$10,000.

He will also ask for support staff from Jack Farley of the Suburban Regional Health Commission to bolster DEP inspection efforts, Papp said.

Proctor said in light of the recent policy changes, his staff could also help with inspections.

State law requires no special certification for odor detection. We have a staff of sanitarians all endowed with noses," Proctor said.

"If someone can come here and train our staff on forms and filing procedures, we'll be happy to have someone come down here on a daily basis."

McGrath noted parking on Oakwood Avenue is legal, so long as cars are removed after 48 hours. However, working on vehicles or running a business on the street is illegal, he said.

One solution, McGrath said, might be to petition township council to limit Oakwood to one- or two-hour-only parking. He also reported Remo's will close for two weeks, probably in September, to "consider some options, such as selling or moving his business."

However, DiPollo said Friday the two-week closing would be for vacation only. On the advice of his attorney, Stephen W. Grubbs of Belleville, he declined further comment on the case.

We believe Mr. DiPollo is operating his business in full compliance with all laws and in full compliance with all permits issued and approved by the state," Grubbs said.



That's Italian! — A group of 26 Italian students who spent a month as guests of Essex families while studying and touring are pictured outside of Our Lady of Mount Carmel Church in nearby Montclair. With the students are Essex County Sheriff Thomas J. D'Alesio standing seventh from left who helped the students tour criminal justice facilities and Monsignor Emanuel Capozzelli, pastor of Our Lady of Mount Carmel parish, where the students had daily English language instruction, standing seventh from right.

### BEN'S LOCK AND GLASS

(Formerly of Contemporary Glass)

- Plate & Safety Glass Replacements
- Commercial Door & Closer Repairs and Installation
- Replacement Windows
- Storm Windows & Doors
- Sliding Patio Doors
- Screens Repaired
- Custom Mirrored Walls
- Tub & Shower Enclosures
- Locks Installed
- Keys Made

**FREE ESTIMATES!**

**CALL TODAY 661-3857**

### ROSSMORE PHARMACY

338 Washington Ave.  
Belleville, N.J.  
**759-1956**

**Shop Rossmore and SAVE!**

Bookcovers • Notebooks • Pens  
Pencils • Paper • Indexers

**back to school supplies**

**AT BIG SAVINGS-HERE**

### GANYMEDE INC.

475 Washington Ave.  
Belleville, N.J. 07109  
751-1266

- Financial Analysis • Tax Management • Systems
- Over ten years experience
- The accounting needs of the professional practice & small business are a specialty
- Fully computerized services
- Plan now for your filing requirements

### The Choice of the People

7 Days  
24 Hours  
Delicious  
Salad Bar  
Italian  
Specialties  
Steaks & Chops

All baking done on premises • Homemade pastries  
Children's Menu Available  
Special Breakfast Menu 6-11 a.m.  
Daily Business Lunch 11 a.m. - 3 p.m. Salad Bar Open 11 a.m. - 10 p.m.  
ALA CARTE and COMPLETE DINNER MENU

**We're Always Open**  
**WILLIE'S**  
**DINER-RESTAURANT**

9 State St., Bloomfield Call 748-7414

### WALL ST. CAFE "STEAK HOUSE"

"We Serve Meals The Old-Fashioned Way"

INTRODUCING:	
24 oz. Sirloin	\$ 8.95
48 oz. Sirloin	17.00
Seven Lobster Tails	9.95
16 oz. Swordfish Steak	9.95
Chicken Wall Street	8.95
24 oz. whole beef, broiled in fine sauce	

**ALSO FEATURING:**  
Wall Street Combo for 2 24.00  
24 oz. Sirloin 16 oz. Super Rich Steak and 4 Lobster Tails

**OUR PORTIONS ARE SHOCKING**  
**So Be Sure To Bring Your Appetites!**

**1050 Wall Street, Lyndhurst, N.J.**  
Breakfast and Lunch Served Daily  
Hours: Mon. thru Sat. 4 to 11 P.M. **939-1188**

# The tracks of life

By Rev. Robert Paul

F. Scott Fitzgerald died before finishing his novel about Hollywood. The Last Tycoon, but he left copious notes with which his editors managed to write an ending to the story. Among the notes was a short paragraph about a minor character, "Kathleen." The realization came to her that the tracks of life would never lead anywhere and were like tracks of the airplane that nobody knew of their place, since there was no Daniel Boone to hack trees. It was an awful lonesome journey. It's a sad little paragraph. For many people the tracks of life seem to lead nowhere yet that is only a manner of speaking; every body knows they lead somewhere, ultimately death. But death is like a massive, closed door beyond which nobody can see anything. Where to the tracks go on the other side of the door? It's not knowing that makes the journey so lonely.

Many believe that death is the end of the road, that the tracks just stop. But it doesn't take much reflection to realize that those who

make such assertions cannot prove the truth of their statements. Maybe they're like thinking that death is the end. This much is certain: no one on earth today has ever died and returned to tell us what happened.

Yet there is a reliable source of information: the Bible. The Bible is revealed truth, including the truth that man survives death, that the tracks of life do not stop at the grave. The Bible clearly teaches that man does not merely survive, he faces God. As one passage has it, "It is appointed unto men once to die, but after this the judgment." Hebrews 9:27. However, issues are not settled at any Judgment Day; they are settled in life by one's response to the Word of the living God. Those who receive the Lord Jesus Christ as personal Saviour are saved or born again, and for them the tracks of life lead to Heaven. St. John 5:24.

Those who reject Jesus Christ are lost. They cannot join Christ whom they have rejected in life. The question is: where are the tracks of life taking you? See 1st John 5:11,12.

# Religious Viewpoints

## THOUGHT FOR THE DAY

If you can keep your head when all about you

Are losing theirs and blaming it on you,

If you can trust yourself when all men doubt you,

But make allowance for their doubting too;

If you can wait and not be tired by waiting,

Or being lied about, don't deal in lies,

Or being hated don't give way to hating,

And yet don't look too good, nor talk too wise.

If you can dream — and not make dreams your master

If you can think — and not make thoughts your aim;

If you can meet with Triumph and Disaster

And treat those two imposters just the same;

If you can bear to hear the truth you've spoken

Twisted by knaves to make a trap for fools,

Or watch the things you gave your life to, broken,

And stoop and build 'em up with worn-out tools.

If you can make one heap of all your winnings

And risk it on one turn of pitch-and-toss,

And lose, and start again at your beginnings

And never breathe a word about your loss;

If you can force your heart and nerve and sinew

To serve your turn long after they are gone,

And so hold on when there is nothing in you

Expect the Will which says to them: "Hold on!"

If you can talk with crowds and keep your virtue,

Or walk with Kings — nor lose the common touch,

If neither foes nor loving friends can hurt you,

If all men count with you, but none too much;

If you can fill the unforgiving minute

With sixty seconds worth of distance run,

Yours is the Earth and everything that's in it,

And which is more — you'll be a Man, my son!

Rudyard Kipling

## Obituaries

### Mass for Donald Posts, 48 Hoffmann-LaRoche welder

A Mass for Donald J. Post, 48, of Belleville was offered August 28 in St. Peter's Church, Belleville, following the funeral from the Kierman Funeral Home, Belleville.

Mr. Post, who died Sunday in the Clara Maass Medical Center, Belleville was a welder for Hoffmann-LaRoche Inc., Nutley, for the past 13 years.

Born in Passaic, he lived in Belleville for many years.

Surviving are four daughters, Maureen, Mary Frances, Patty and Kate Post, a son, Kevin, two brothers, Edward and James, two sisters, Bernadette Post and Mercedes Cavanaugh, and a grandchild.

#### BELLEVILLE BOARD OF EDUCATION MEETING SCHEDULE 1986-1987 SCHOOL YEAR

Date	Time	Item	Location
1986			
September 8	7:30 p.m.	Private Executive Session	Board Office Complex
September 15	8 p.m.	Public Business Meeting	Board Office Complex
September 29	7:30 p.m.	Private Executive Session	School No. 10
October 6	8 p.m.	Public Business Meeting	Board Office Complex
October 20	7:30 p.m.	Private Executive Session	Board Office Complex
October 27	8 p.m.	Public Business Meeting	Board Office Complex
November 3	7:30 p.m.	Private Executive Session	Board Office Complex
November 10	8 p.m.	Public Business Meeting	Board Office Complex
November 17	7:30 p.m.	Private Executive Session	Board Office Complex
November 24	8 p.m.	Public Business Meeting	Board Office Complex
December 1	7:30 p.m.	Private Executive Session	Board Office Complex
December 8	8 p.m.	Public Business Meeting	Board Office Complex
December 15	7:30 p.m.	Private Executive Session	Board Office Complex
December 22	8 p.m.	Public Business Meeting	Board Office Complex
1987			
January 5	7:30 p.m.	Private Executive Session	Board Office Complex
January 12	8 p.m.	Public Business Meeting	Board Office Complex
January 19	7:30 p.m.	Private Executive Session	Board Office Complex
January 26	8 p.m.	Public Business Meeting	Board Office Complex
February 2	7:30 p.m.	Private Executive Session	Board Office Complex
February 9	8 p.m.	Public Business Meeting	Board Office Complex
February 16	7:30 p.m.	Private Executive Session	Board Office Complex
February 23	8 p.m.	Public Business Meeting	Board Office Complex
March 2	7:30 p.m.	Private Executive Session	Board Office Complex
March 9	8 p.m.	Public Business Meeting	Board Office Complex
March 16	7:30 p.m.	Private Executive Session	Board Office Complex
March 23	8 p.m.	Public Business Meeting	Board Office Complex
April 6	7:30 p.m.	Private Executive Session	Board Office Complex
April 13	8 p.m.	Public Business Meeting	Board Office Complex
April 20	7:30 p.m.	Private Executive Session	Board Office Complex
April 27	8 p.m.	Public Business Meeting	Board Office Complex
May 4	7:30 p.m.	Private Executive Session	Board Office Complex
May 11	8 p.m.	Public Business Meeting	Board Office Complex
May 18	7:30 p.m.	Private Executive Session	Board Office Complex
May 25	8 p.m.	Public Business Meeting	Board Office Complex
June 1	7:30 p.m.	Private Executive Session	Board Office Complex
June 8	8 p.m.	Public Business Meeting	Board Office Complex
June 15	7:30 p.m.	Private Executive Session	Board Office Complex
June 22	8 p.m.	Public Business Meeting	Board Office Complex

The Belleville Times

Sept. 4, 1986

Fee: \$50.00

## ORTHODONTICS

AFFORDABLE BRACES FOR CHILDREN & ADULTS



CONVENIENT HOURS (EVENINGS TOO!)

DENTAL INSURANCE WELCOME

SECOND OPINIONS PROVIDED

NEVER A CHARGE FOR CONSULTATIONS  
DR. MICHAEL B. FITZPATRICK  
DR. BRUCE FOX

484 Washington Ave. Belleville  
759-2173

## SECURITY NATIONAL'S 24 HR. AUTO LOAN

11.35 9.9% ANNUAL PERCENTAGE RATE



SECURITY NATIONAL BANK & TRUST COMPANY OF NEW JERSEY

FOR MORE INFORMATION CALL THE NUTLEY OFFICES:

Joanne M. Paulson, A.V.P.  
Branch Manager  
213 Harrison Street  
(201) 661-5110

Diane B. Gruber, A.C.  
Branch Manager  
431 Kingsland Street  
(201) 661-5121

MEMBER FDIC  
AN EQUAL OPPORTUNITY LENDER

## You're always welcome!

Many clubs have stringent entry requirements. Applicants failing to meet the standards are barred from membership.

Certain organizations such as one formed for a particular service or ministry must understandably limit membership to those whose interests and beliefs are in accord with the association's purpose.

Stipulations regarding entrance to some clubs or societies, however, often reflect the aloofness and elitist mentality of the members, who welcome only a certain type of person — their own type.

In contrast to such subtle snobbery are the sentiments echoed in the lines of the sonnet:



By Pastor Gerald Fortunato

Give me your tired, your poor  
Your huddled masses yearning to breathe free.  
The wretched refuse of your teeming shore.  
Send these, the homeless, tempest-tossed to me.  
I lift my lamp beside the golden door.

In that poem, America is depicted as "the mother of exiles," who welcomes the persecuted, rejected, and disadvantaged to find a haven in a new homeland.

In many ways, that is a faint depiction of God's attitude toward everyone. He is not an austere autocrat who holds people at arm's length with impossible stipulations for admission to his presence.

Quite the reverse!

Jesus clearly enunciated our heavenly Father's "open door" policy: "I have come to urge sinners, not the self-righteous, back to God" (Matthew 9:13).

"Sick people need a doctor, not healthy ones! I haven't come to tell good people to repent, but the bad ones" (Mark 2:17).

"My purpose is to invite sinners to turn from their sins, not to spend my time with those who think themselves already good enough" (Luke 5:32).

In spite of such clear words, we are apt to fall into the trap of imagining that before we dare to approach God we must make ourselves 100 percent presentable or, at least, improve a great deal. Otherwise, we feel that we dare not approach him.

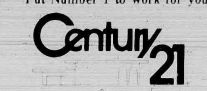
But that attitude is self-defeating. We can never earn his approval. The reality is that he welcomes us in spite of what we are. In fact, only those who deeply sense their need will repent of their sins and trust Jesus Christ, who died to save sinners.

"Come to me and I will give you rest — all of you who work so hard beneath a heavy load" (Jesus Christ, from Matthew 11:28).

## Don't get a job, get a career.

We're part of the nation's largest real estate sales organization and we're hiring people now. People who know a great opportunity when they see it. People who want a career that offers independence and high earnings. And we'll prepare you for it through the exclusive CENTURY 21 CareerTrack training program. If all this sounds like what you're looking for, give us a call today.

Put Number 1 to work for you.



HOMES R US, INC.  
549 Washington Avenue  
Belleville, N.J.  
751-8800  
Independently Owned & Operated

**2ND ANNUAL**  
**Bedspread**  
**blowout sale**  
3 DAYS ONLY - THURS., FRI., & SAT.

Tremendous selection, all sizes-king, queen, full & twin. Many with matching drapes.  
UP TO **60% OFF REG. PRICES.**

**IMPORTED EMBROIDERED FRENCH TERGALS BY LA PIERRE** IF PERFECT VALUES TO 565  
CHOICE OF COLORS: ROSE - SKY - AMBER  
60" x \$19.99 90" x \$20.99 60" x \$21.99  
84" x \$19.99 90" x \$20.99 95" x \$21.99

**WINDOW SHADE SUPER SALE**  
Custom-made for ready-made translucent & room-darkening **30% OFF REG. PRICES.**

**VERTICAL BLINDS**  
**New Impressions** Collection  
Brand-new, full palette of fashion colors

**50% OFF MFG. PRICES.**

MASTERCARD & VISA ACCEPTED  
AMPLE PARKING AT ALL LOCATIONS

**Rich's**  
CURTAINS  
HOME FASHION CENTERS

BLOOMFIELD, NJ 452 BROAD ST. 743-9600  
PARLIPPANY, NJ 782 ROUTE 46 WEST 263-1515  
NO ARLINGTON, NJ 35 RIDGE ROAD 997-4373





## DIAL-A-SERVICE

**2943 AIR CONDITIONING**

CASALE HEATING & COOLING CO.  
For prompt and affordable air conditioning service call us at home or auto.  
Call 759-9579

**AIR CONDITIONERS & REFRIGERATORS REPAIRED & INSTALLED**  
7 Days Per Week  
\$7.50 Service Charge  
Call 933-5244

**2945 ALARMS**

**DOOR CLEANERS**  
LOCK & GLASS  
Custom Picture & Mirror Framing  
Storm Doors & Windows new & repaired  
Tub & Shower enclosures  
Custom mirrored walls  
Locks installed, repaired, rekeyed  
Wood doors installed  
Leaded glass repaired  
Keys made, duplicate keys  
All types of window glass  
Auto glass  
Sliding glass doors  
Burglar alarms  
Burglar alarms  
255 Hoover Ave.  
Inter. of JFK Hwy.  
Bloomfield 748-6774

**2949 APPLIANCE REPAIRS**

**LAWN MOWER REPAIRS**  
**SUNBEAM Specialists**  
Parts & Service  
Call 748-6819

**WE REPAIR**  
Washers & Dryers  
Refrigerators  
Freezer  
Air Conditioning  
Commercial & Central  
CHILKLEY & SON  
Service 667-9278

**SEWING MACHINE REPAIRS**

**ALL MAKES HOME SERVICE**  
FREE ESTIMATES  
10 YEARS EXPERIENCE  
991-2990

**2948 CARPET FURNITURE & DRAPERY CLEANING**

**FLANN'S CARPET SERVICE**  
Cleaning, Installations, Repairs  
2 rooms cleaned \$32.00  
3 rooms cleaned \$42.00  
Call for estimate  
991-4185

**FULL STEAM AHEAD!**  
Carpet Steam Clean  
By hydro-audio truckmount  
Just try it for 10 minutes  
For future service call clean  
American  
Carpet Care  
522-1340

**2941 CLEANING SERVICES**

**A POLISH TOUCH HOME CLEANING SERVICE**  
We Wash Walls  
Windows  
Kitchens  
Bathrooms  
Halls  
Dust  
Polish etc.  
FREE ESTIMATE  
CALL 996-0424

**A cleaning service can change your life & make things so much easier. Just try it at 21 time & I'll bet you'll just want us again.**

**2941 CONSTRUCTION**

**J. CAPANER GENERAL CONTRACTOR**

**NEW HOMES**

**AND AFFORDABLE MODULAR HOMES**

**WE DO AND SELL OUR OWN WORK NO MIDDLEMAN**  
Call 483-2793

**29413 CONSTRUCTION**

**GENERAL CONTRACTORS**

Custom Remodeling  
Alterations/Repairs  
Carpentry  
Sheet Rock & Tile  
Bathrooms  
Basements  
Kitchens

Full Ins. Lic.  
Essex County Grants  
751-4862  
BELLEVILLE

**2947 DRIVEWAYS**

**ASPHALT PAVING**

DRIVEWAYS  
PARKING LOTS  
CONCRETE WALKS  
STEPS  
FREE ESTIMATES  
FULLY INSURED  
FRANK J. SCAROLA, INC.  
991-F-A-R-H

**KEN'S DRIVEWAY SEALING**  
Reas. - Reasonably Quality  
Work  
Call 225-9222  
Weekdays after 4 p.m.  
Anytime Sat. or Sun.

**2945 ELECTRICIANS**

**DE LUZO ELECTRICAL CONTRACTING INC.**  
Residential  
No job too small or too far  
FREE ESTIMATES  
CALL 562-2907  
License No. 4801

**VALERA ELECTRIC**

Commercial  
Residential  
Industrial  
24 Hour Emergency  
Call 279-4070

**JOE SERVIDO**  
Electrical Contractor  
Industrial/Commercial  
Residential  
We Do It All  
No Job Too Small - No Job Too Big  
Bonded & Insured

**MICHAEL BARILETTANO**  
ELECTRICAL CONTRACTOR  
Residential & Commercial  
Insured & Bonded  
Lic. No. 7076  
Free Estimates  
24 Hour Service  
Call 867-4773

**2943 FENCES**

**V & CO.**  
Railroad Tie For  
Walls & Patios  
2-Steps  
Flower Beds  
All Types of Fences  
Complete Landscaping  
Free Estimates  
Belleville  
Call anytime  
751-6387

**2945 GUTTERS**

**GUTTERS & LEADERS**  
thoroughly  
cleaned,  
flushed

**INSURED**  
(830-850)  
Minor Tree Trimming  
Clip 'n Save

**Ned Stevens**  
226-7379  
7 Days 5 p.m. Best Time!

**29413 CONSTRUCTION**

**J. CAPANER GENERAL CONTRACTOR**

**NEW HOMES**

**AND AFFORDABLE MODULAR HOMES**

**WE DO AND SELL OUR OWN WORK NO MIDDLEMAN**  
Call 483-2793

**2945 GUTTERS**

**GUTTERS & LEADERS**  
thoroughly  
cleaned,  
flushed

**INSURED**  
(830-850)  
Minor Tree Trimming  
Clip 'n Save

**Ned Stevens**  
226-7379  
7 Days 5 p.m. Best Time!

**29413 CONSTRUCTION**

**J. CAPANER GENERAL CONTRACTOR**

**NEW HOMES**

**AND AFFORDABLE MODULAR HOMES**

**WE DO AND SELL OUR OWN WORK NO MIDDLEMAN**  
Call 483-2793

**2945 GUTTERS**

**GUTTERS & LEADERS**  
thoroughly  
cleaned,  
flushed

**INSURED**  
(830-850)  
Minor Tree Trimming  
Clip 'n Save

**Ned Stevens**  
226-7379  
7 Days 5 p.m. Best Time!

**29413 CONSTRUCTION**

**J. CAPANER GENERAL CONTRACTOR**

**NEW HOMES**

**AND AFFORDABLE MODULAR HOMES**

**WE DO AND SELL OUR OWN WORK NO MIDDLEMAN**  
Call 483-2793

**2945 GUTTERS**

**GUTTERS AND LEADERS**  
CLEANED, REPAIRED  
OR REPLACED WITH  
HEAVY GAUGE  
SEAMLESS WHITE OR  
BROWN ALUMINUM  
ALSO ROOFING &  
SIDING REPAIRS  
CALL AL ROBERTS  
751-5402 or 759-7106  
ANYTIME EVENING &  
WEEKENDS OK  
FULLY INS. FREE EST.

**2945 HANDYMAN**

**HANDYMAN**  
PAINTING  
CLEAN GUTTERS  
SEAL DRIVEWAYS  
NO JOB TOO SMALL  
CALL ANYTIME  
759-1467

**HANDYMAN**  
WILL PAY MORE  
ROOFING  
GUTTERS CLEANED  
WINDOWS ORBS  
PAINTING ETC  
FREE ESTIMATES  
CALL JOE  
759-0724

**2947 HOME IMPROVEMENT**

**PICTURE PERFECT INTERIOR DESIGN**

Painting  
Plastering  
Carpentry  
Doors  
Siding  
Basements  
Windows  
Remodeled  
Call Mondays to Saturday  
8 a.m. to 8 p.m.  
Fully Ins. Free Est.

**2947 HOME IMPROVEMENT**

**PAINTING**  
Plastering  
Carpentry  
Doors  
Siding  
Basements  
Windows  
Remodeled  
Call Mondays to Saturday  
8 a.m. to 8 p.m.  
Fully Ins. Free Est.

**2947 HOME IMPROVEMENT**

**PAINTING**  
Plastering  
Carpentry  
Doors  
Siding  
Basements  
Windows  
Remodeled  
Call Mondays to Saturday  
8 a.m. to 8 p.m.  
Fully Ins. Free Est.

**2947 HOME IMPROVEMENT**

**PAINTING**  
Plastering  
Carpentry  
Doors  
Siding  
Basements  
Windows  
Remodeled  
Call Mondays to Saturday  
8 a.m. to 8 p.m.  
Fully Ins. Free Est.

**2947 HOME IMPROVEMENT**

**PAINTING**  
Plastering  
Carpentry  
Doors  
Siding  
Basements  
Windows  
Remodeled  
Call Mondays to Saturday  
8 a.m. to 8 p.m.  
Fully Ins. Free Est.

**2947 HOME IMPROVEMENT**

**PAINTING**  
Plastering  
Carpentry  
Doors  
Siding  
Basements  
Windows  
Remodeled  
Call Mondays to Saturday  
8 a.m. to 8 p.m.  
Fully Ins. Free Est.

**2947 HOME IMPROVEMENT**

**PAINTING**  
Plastering  
Carpentry  
Doors  
Siding  
Basements  
Windows  
Remodeled  
Call Mondays to Saturday  
8 a.m. to 8 p.m.  
Fully Ins. Free Est.

**2947 HOME IMPROVEMENT**

**PAINTING**  
Plastering  
Carpentry  
Doors  
Siding  
Basements  
Windows  
Remodeled  
Call Mondays to Saturday  
8 a.m. to 8 p.m.  
Fully Ins. Free Est.

**2947 HOME IMPROVEMENT**

**PAINTING**  
Plastering  
Carpentry  
Doors  
Siding  
Basements  
Windows  
Remodeled  
Call Mondays to Saturday  
8 a.m. to 8 p.m.  
Fully Ins. Free Est.

**2947 HOME IMPROVEMENT**

**PAINTING**  
Plastering  
Carpentry  
Doors  
Siding  
Basements  
Windows  
Remodeled  
Call Mondays to Saturday  
8 a.m. to 8 p.m.  
Fully Ins. Free Est.

**2947 HOME IMPROVEMENT**

**PAINTING**  
Plastering  
Carpentry  
Doors  
Siding  
Basements  
Windows  
Remodeled  
Call Mondays to Saturday  
8 a.m. to 8 p.m.  
Fully Ins. Free Est.

**2947 HOME IMPROVEMENT**

**PAINTING**  
Plastering  
Carpentry  
Doors  
Siding  
Basements  
Windows  
Remodeled  
Call Mondays to Saturday  
8 a.m. to 8 p.m.  
Fully Ins. Free Est.

**2947 HOME IMPROVEMENT**

**PAINTING**  
Plastering  
Carpentry  
Doors  
Siding  
Basements  
Windows  
Remodeled  
Call Mondays to Saturday  
8 a.m. to 8 p.m.  
Fully Ins. Free Est.

**2947 HOME IMPROVEMENT**

**PAINTING**  
Plastering  
Carpentry  
Doors  
Siding  
Basements  
Windows  
Remodeled  
Call Mondays to Saturday  
8 a.m. to 8 p.m.  
Fully Ins. Free Est.

**2947 HOME IMPROVEMENT**

**PAINTING**  
Plastering  
Carpentry  
Doors  
Siding  
Basements  
Windows  
Remodeled  
Call Mondays to Saturday  
8 a.m. to 8 p.m.  
Fully Ins. Free Est.

**2947 HOME IMPROVEMENT**

**PAINTING**  
Plastering  
Carpentry  
Doors  
Siding  
Basements  
Windows  
Remodeled  
Call Mondays to Saturday  
8 a.m. to 8 p.m.  
Fully Ins. Free Est.

**2947 HOME IMPROVEMENT**

**PAINTING**  
Plastering  
Carpentry  
Doors  
Siding  
Basements  
Windows  
Remodeled  
Call Mondays to Saturday  
8 a.m. to 8 p.m.  
Fully Ins. Free Est.

**2947 HOME IMPROVEMENT**

**PAINTING**  
Plastering  
Carpentry  
Doors  
Siding  
Basements  
Windows  
Remodeled  
Call Mondays to Saturday  
8 a.m. to 8 p.m.  
Fully Ins. Free Est.

**2947 HOME IMPROVEMENT**

**2947 HOME IMPROVEMENT**

**OVERHEAD GARAGE DOORS**  
Revised & Installed  
Service  
ELECTRIC DOOR OPENERS  
Sales & Installation  
MEDANET ENTERPRISES  
867-4976

**2947 HOME IMPROVEMENT**

**OVERHEAD GARAGE DOORS**  
Revised & Installed  
Service  
ELECTRIC DOOR OPENERS  
Sales & Installation  
MEDANET ENTERPRISES  
867-4976

**2947 HOME IMPROVEMENT**

**OVERHEAD GARAGE DOORS**  
Revised & Installed  
Service  
ELECTRIC DOOR OPENERS  
Sales & Installation  
MEDANET ENTERPRISES  
867-4976

**2947 HOME IMPROVEMENT**

**OVERHEAD GARAGE DOORS**  
Revised & Installed  
Service  
ELECTRIC DOOR OPENERS  
Sales & Installation  
MEDANET ENTERPRISES  
867-4976

**2947 HOME IMPROVEMENT**

**OVERHEAD GARAGE DOORS**  
Revised & Installed  
Service  
ELECTRIC DOOR OPENERS  
Sales & Installation  
MEDANET ENTERPRISES  
867-4976

**2947 HOME IMPROVEMENT**

**OVERHEAD GARAGE DOORS**  
Revised & Installed  
Service  
ELECTRIC DOOR OPENERS  
Sales & Installation  
MEDANET ENTERPRISES  
867-4976

**2947 HOME IMPROVEMENT**

**OVERHEAD GARAGE DOORS**  
Revised & Installed  
Service  
ELECTRIC DOOR OPENERS  
Sales & Installation  
MEDANET ENTERPRISES  
867-4976

**2947 HOME IMPROVEMENT**

**OVERHEAD GARAGE DOORS**  
Revised & Installed  
Service  
ELECTRIC DOOR OPENERS  
Sales & Installation  
MEDANET ENTERPRISES  
867-4976

**2947 HOME IMPROVEMENT**

**OVERHEAD GARAGE DOORS**  
Revised & Installed  
Service  
ELECTRIC DOOR OPENERS  
Sales & Installation  
MEDANET ENTERPRISES  
867-4976

**2947 HOME IMPROVEMENT**

**OVERHEAD GARAGE DOORS**  
Revised & Installed  
Service  
ELECTRIC DOOR OPENERS  
Sales & Installation  
MEDANET ENTERPRISES  
867-4976

**2947 HOME IMPROVEMENT**

**OVERHEAD GARAGE DOORS**  
Revised & Installed  
Service  
ELECTRIC DOOR OPENERS  
Sales & Installation  
MEDANET ENTERPRISES  
867-4976

**2947 HOME IMPROVEMENT**

**OVERHEAD GARAGE DOORS**  
Revised & Installed  
Service  
ELECTRIC DOOR OPENERS  
Sales & Installation  
MEDANET ENTERPRISES  
867-4976

**2947 HOME IMPROVEMENT**

**OVERHEAD GARAGE DOORS**  
Revised & Installed  
Service  
ELECTRIC DOOR OPENERS  
Sales & Installation  
MEDANET ENTERPRISES  
867-4976

**2947 HOME IMPROVEMENT**

**OVERHEAD GARAGE DOORS**  
Revised & Installed  
Service  
ELECTRIC DOOR OPENERS  
Sales & Installation  
MEDANET ENTERPRISES  
867-4976

**2947 HOME IMPROVEMENT**

**OVERHEAD GARAGE DOORS**  
Revised & Installed  
Service  
ELECTRIC DOOR OPENERS  
Sales & Installation  
MEDANET ENTERPRISES  
867-4976

**2947 HOME IMPROVEMENT**

**OVERHEAD GARAGE DOORS**  
Revised & Installed  
Service  
ELECTRIC DOOR OPENERS  
Sales & Installation  
MEDANET ENTERPRISES  
867-4976

**2947 HOME IMPROVEMENT**

**OVERHEAD GARAGE DOORS**  
Revised & Installed  
Service  
ELECTRIC DOOR OPENERS  
Sales & Installation  
MEDANET ENTERPRISES  
867-4976

**2947 HOME IMPROVEMENT**

**OVERHEAD GARAGE DOORS**  
Revised & Installed  
Service  
ELECTRIC DOOR OPENERS  
Sales & Installation  
MEDANET ENTERPRISES  
867-4976

**2947 HOME IMPROVEMENT**

**OVERHEAD GARAGE DOORS**  
Revised & Installed  
Service  
ELECTRIC DOOR OPENERS  
Sales & Installation  
MEDANET ENTERPRISES  
867-4976

**2947 HOME IMPROVEMENT**

**OVERHEAD GARAGE DOORS**  
Revised & Installed  
Service  
ELECTRIC DOOR OPENERS  
Sales & Installation  
MEDANET ENTERPRISES  
867-4976

**2947 HOME IMPROVEMENT**

**OVERHEAD GARAGE DOORS**  
Revised & Installed  
Service  
ELECTRIC DOOR OPENERS  
Sales & Installation  
MEDANET ENTERPRISES  
867-4976

**2947 HOME IMPROVEMENT**

**2945 MASONRY**

**F. CUTO MASON CONTRACTOR**  
Sideracks  
Driveways  
Patios  
Brick Work  
FREE ESTIMATES  
Call after 5 p.m.  
968-5952/759-8489

**2945 MASONRY**

**F. CUTO MASON CONTRACTOR**  
Sideracks  
Driveways  
Patios  
Brick Work  
FREE ESTIMATES  
Call after 5 p.m.  
968-5952/759-8489

**2945 MASONRY**

**F. CUTO MASON CONTRACTOR**  
Sideracks  
Driveways  
Patios  
Brick Work  
FREE ESTIMATES  
Call after 5 p.m.  
968-5952/759-8489

**2945 MASONRY**

**F. CUTO MASON CONTRACTOR**  
Sideracks  
Driveways  
Patios  
Brick Work  
FREE ESTIMATES  
Call after 5 p.m.  
968-5952/759-8489

**2945 MASONRY**

**F. CUTO MASON CONTRACTOR**  
Sideracks  
Driveways  
Patios  
Brick Work  
FREE ESTIMATES  
Call after 5 p.m.  
968-5952/759-8489

**2945 MASONRY**

**F. CUTO MASON CONTRACTOR**  
Sideracks  
Driveways  
Patios  
Brick Work  
FREE ESTIMATES  
Call after 5 p.m.  
968-5952/759-8489

**2945 MASONRY**

**F. CUTO MASON CONTRACTOR**  
Sideracks  
Driveways  
Patios  
Brick Work  
FREE ESTIMATES  
Call after 5 p.m.  
968-5952/759-8489

**2945 MASONRY**

**F. CUTO MASON CONTRACTOR**  
Sideracks  
Driveways  
Patios  
Brick Work  
FREE ESTIMATES  
Call after 5 p.m.  
968-5952/759-8489

**2945 MASONRY**

**F. CUTO MASON CONTRACTOR**  
Sideracks  
Driveways  
Patios  
Brick Work  
FREE ESTIMATES  
Call after 5 p.m.  
968-5952/759-8489

**2945 MASONRY**

**F. CUTO MASON CONTRACTOR**  
Sideracks  
Driveways  
Patios  
Brick Work  
FREE ESTIMATES  
Call after 5 p.m.  
968-5952/759-8489

**2945 MASONRY**

**F. CUTO MASON CONTRACTOR**  
Sideracks  
Driveways  
Patios  
Brick Work  
FREE ESTIMATES  
Call after 5 p.m.  
968-5952/759-8489

**2945 MASONRY**

**F. CUTO MASON CONTRACTOR**  
Sideracks  
Driveways  
Patios  
Brick Work  
FREE ESTIMATES  
Call after 5 p.m.  
968-5952/759-8489

**2945 MASONRY**

**F. CUTO MASON CONTRACTOR**  
Sideracks  
Driveways  
Patios  
Brick Work  
FREE ESTIMATES  
Call after 5 p.m.  
968-5952/75



## 3175 SALES

## RETAIL

**The Opportunity You've Been Waiting For is Waiting For You At Hahne's**

Hahne's has great sales opportunities available for aggressive individuals eager for a position that can launch a promising career! Opportunities are available in:

## SALES

Full Time  
Part Time 11am-3pm  
Saturdays Only

Part of what makes Hahne's a frontrunner in the retail industry is our ability to attract and reward dynamic people who are ready to begin the momentum of an exciting career in retailing. Come talk to us about our competitive salaries/benefits that include a storewide shopping discount, and the chance to become an integral part of one of New Jersey's major department stores.

Apply to our Personnel Office Monday-Friday 10am-12noon or 1pm-4pm.

**hahne's**  
a new jersey tradition

609 Broad St. Newark, NJ  
equal opportunity employer M.F.

## COSMETICS

## SALES

**Let hahne's Change The Complexion Of Your Career**

We seek dynamic, creative sales professionals to sell our prestigious line of cosmetics at:

## REVOLUTION

## ARDEN

## MONTEIL

## LAUDER

Part Time 11am-4pm  
If you've had previous cosmetics sales background, come see how profitable it can be to work in an exciting cosmetics area. We can offer fashion-conscious individuals who are knowledgeable about cosmetics products and makeup application, attractive salaries, superior benefits, and storewide shopping discounts. Apply to Personnel Dept. Monday-Friday 10am-12noon or 1pm-4pm.

**hahne's**  
a new jersey tradition

609 Broad St. Newark, NJ  
equal opportunity employer M.F.

## 3155 SALES

## MERCHANDISE

## ARTICLES FOR SALE

## BILCO BASEMENT

## DOOR FOR SALE ANY

## REASONABLE OFFER

## 661-9006

## CERAMICS BY 'ANN'

## Classes Monday &amp;

## Wednesday, 7:30-9 PM.

## Beginners. Welcome.

## Complete ceramics for

## sale. Flipping Supplies

## Greenware.

## 31 Columbus Ave.

## Belleville

## 751-2462.

## POOL 15x4 &amp; Filter

## 759-5374

## SEWING MACHINE

## never used \$139. \$89.

## Model with factors

## guaranteed. 484-5522.

## WANTED

## USED AIR

## CONDITIONERS

## CASH

## 485-3681

## HALF PRICE! Flashing

## arrow signs \$269

## Lighted, non-flare \$259

## Unlighted \$229. Free

## lamps. Factory warranty.

## Very limited quantity.

## Call today! 1-800-623-6103

## anytime

## Above ground oval

## shaped pool 15x24 x 48

## in. 1/2" filter double deck

## excellent condition.

## 751-6174

## 37411

## ARTICLES WANTED

## LIONEL AND

## OTHER TRAINS

## CRAZY COLLECTOR

## PAYS TOP PRICE.

## CALL 334-8709

## OR 633-2058

## USED TV'S

## BOUGHT

## CALL

## 673-3845

## TM BUYING

## TOOLS

## Old, Used, Any

## Type. Any Quantity.

## Call "Gene" 698-

## 4908 4-6 pm

## 7413 Days excluding

## Sunday &amp; Monday

## GUN COLLECTOR

## Wants to buy for

## cash. Guns. Swords.

## Daggers. Bayonets.

## Especially Military

## Items.

## Registered Appraiser.

## All transactions confidential.

## Call 751-6145

## 374

## FLEA MARKETS

## ANNUAL ANTIQUE

## CAR SHOW

## Fund Raising

## Antique Car Show

## Flea Market

## Craft Show

## Sunday, Sept. 7, raindate

## Sept. 14, 9am-5pm

## 10-12pm. For info, call

## 985-97-8265. Over 100

## dealers! Sponsored by

## Nuttley Kids. Crieddip

## Children. Assn. Miss it!

## 3155 SALES

## REAL ESTATE

## Salesperson and

## Brokers. Licensed

## classes are now

## forming.

## AMERICAN

## SCHOOL OF

## REAL ESTATE

## 571 Bloomfield Ave.

## Verona

## For information call

## 239-1216 or 239-1244

## Lingerie Sales

## UNDER COVER WEAR

## Become a part of the

## innovator of home lingerie

## parties. Have fun

## sharing money. Gems

## and trips. Bookings

## open. No collecting

## no delivery.

## Call 748-0692

## 3745 ANTIQUES

## ANTIQUES

## OAK FURNITURE

## Dressers, m. tables

## china closet, wash

## stands, brocade

## serrers, bedroom set,

## mirrors &amp; bric a brac.

## Call 748-0692

## The Nutley Sun

## Belleville Times

## Bloomfield Life

## 667-3000

## 3765

## GARAGE SALES

## NUTLEY

## 149 Centre Street, Sept. 6

## &amp; 7, 9:30 to 4:30. Wide

## variety of items, furni-

## ture, chandeliers, books,

## clothing, 2 A/C's, priced

## to sell, no early birds!

## Garage Sale

## Sept. 6, 8am to 4pm

## 124 Division Ave. Belleville

## Tools, housewares, chil-

## dren's clothing + more

## ONE DAY

## GARAGE SALE

## 71 Baldwin Pl. Belleville

## Saturday, Sept. 6, 9-4 PM

## Betting room set, server

## A.C. rug, dresser, stereo

## unit, cabinets + much

## more. Rain date

## Sunday, Sept. 7

## Yard Sale

## Loads of kids clothes and

## toys, household items

## much more. Sat. 8-10:30

## 110 Division Ave. Bel-

## leville

## YARD SALE

## One day only

## Sat. Sept. 6, 10AM-5PM

## 20 Woodcrest Lane

## Off Mt. Vernon

## Nutley

## YARD SALE

## Fireplace, console TV,

## sofa, redwood table, &amp;

## benches, furniture, swim-

## ming, other household

## items. Sat. &amp; Sun. Sept. 6

## &amp; 7, 10-5. Rain or shine. 50

## Meacham St. Belleville

## Equal Housing

## Opportunity

## 4105 CONDOMINIUMS

## FOR SALE

## Semi-Conto

## Nutley, incl. 1 B.R.

## fully eq. kitch. D.A. &amp;

## L.R. w. b/w. w. b/w.

## w. evergreen swim-

## ming, pool, recreation

## pkg. close to trans. open

## house Sat. 10:30 Sun. 12

## River Rd. apt. 1-667-2576

## Call after 6:30 PM

## BELLEVILLE &amp; yr old 2

## B.R. luxury condo. L.R.

## D.R. kit, util. room, 1

## bath, walk in closet

## all appliances, low

## maintenance, many ex-

## tras, ext. loc. &amp; neigh-

## borhood. Call 751-0347

## NO FRILLS PRICE

## Available by the Clairmont

## Hospital. 1 B.R. condo

## with large L.R. Kit &amp;

## bath, maintenance fee

## only \$107 per mo. tax

## including H.W. &amp; low

## tax. For viewing 773-6262

## CIRKUS

## 4115

## HOUSES FOR SALE

## BELLEVILLE

## 1 FAMILY CAPE

## Attractive, combined

## brick &amp; aluminum 3 B.R.

## home situated on a large

## 45 x 150 lot on quiet

## dear street. 1 car gar-

## age. Partially completed

## basement. beautiful

## park-like yard with 1

## year old above ground

## pool. Many extras. As-

## king \$150,000.

## Must split-sep. anxious

## govel/realtors

## REALTORS 751-7500

## Belleville By owner

## \$153,000 neg. Lovely

## aluminum sided on quiet

## dead end. Schools &amp;

## public transportation

## nearby. Fence fenced in

## with 10' high. 1 car gar-

## age. B.R.'s partially finished

## attic &amp; attached garage.

## 751-1454

## 3715 MUSICAL

## INSTRUMENTS

## PIANO &amp; ORGAN

## WAREHOUSE SHOWROOM

## for the largest Piano and Organ Dealer on

## the East Coast

## New Used Floor Models, Demos

## 15 NATIONALLY FAMOUS BRANDS

## Over 300 Catalogued Instruments

## Guaranteed Lowest Prices

## Used Pianos and Organs from

## \$99

## Rental Purchase Plan Available

## Call or see Ed Borja

## 744-1200

## Baldwin - Hammond

## Div. of Allenburg Piano, Montclair

## 507 Bloomfield Avenue, Montclair

## 4115

## HOUSES FOR SALE

## OPEN HOUSES

## SUNDAY SEPT. 7

## 1-5 PM

## Hudson Place

## Bloomfield

## 10x13 bedroom home

## with natural woodwork

## and kitchen. Kitchen

## screened porch, patio

## much more! \$169,900

## Call 751-0347

## 8 CHESTNUT TERR.

## Bloomfield

## Quality brick home.

## Lovely spacious 4

## bedroom home with

## beautiful property.

## Finished basement with

## full bath. \$179,900. Dir.

## of Franklin Avenue. 1

## light above Jerusalem

## Street.

## ERINSTE AVENUE

## Bloomfield

## Beautiful Colonial on

## quiet tree lined street.

## Super area. Features

## fireplace, charmer

## modern kitchen

## central air. \$244,900. Dir.

## of Passaic Ave. 1

## light above Jerusalem

## Street.

## 20 ASHLAND AVE

## Bloomfield

## Country charmer

## features new kitchen

## beautiful living room

## with fireplace. Large

## property. 2 garages. So

## much more. \$185,900

## Dir. of Highway 20 to

## Washington Street, right

## on Ashland

## SATURDAY SEPT. 6

## 4 SUMMIT AVENUE

## Bloomfield

## Spacious Colonial

## status family room

## with skylight, cozy

## breakfast room, deck

## fireplace, dining room.

## Come see. \$169,900. Dir.

## East Passaic Ave. south

## turn left on Hoover Ave.

180 Centre St.  
Nutley, N.J. 07110  
667-3440

# GEORGE E. MACMUNN CO.

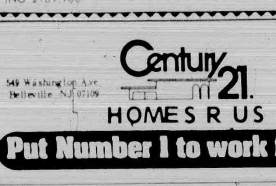
REALTORS

100 Woodport Road  
Sparta, N.J. 07871  
729-8727

**NUTLEY** - completely updated, 2 new baths, mod eat in kitchen, family rm., off kitchen, garage & beautifully landscaped 180' deep property. ASKING \$169,900.



**NUTLEY PARK** - Country atmosphere at its best. Lovely Liv. Rm., Den on 1st, extra lg. Din. Rm., large country kit. 3 tripls, 4 good size BR's. All in very good condition. ASKING \$189,900.



**SPARTA** - Huge landscaped lot with private patio, Liv. Rm. w/ frpl, Din. Rm., eat-in kit, 2 bedrooms, new w/w carpeting. ASKING \$132,500.

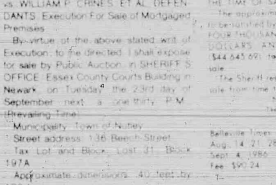


**LAKE MOHAWK** - Across from lake w/ beautiful views, 3 Bedrooms, frpl., formal Din. Rm., lovely deck & much more. ASKING \$132,900.

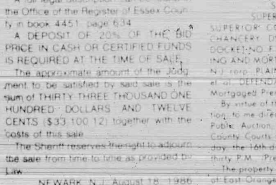


**DO YOU KNOW WHAT YOUR HOUSE IS WORTH TODAY?**

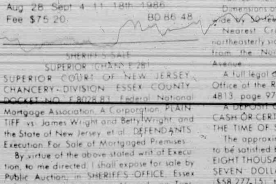
We offer a current market Value analysis... Just pick up the phone & call



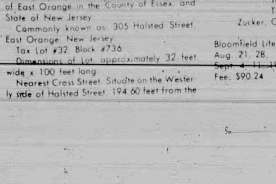
Look for this Emblem



Put Number 1 to work for you.



Find out how much your home is worth... call today for a free market analysis!



Each office is independently owned and operated. Equal housing opportunity.

## WAYNE K. THOMAS REALTORS



**ST. VAL'S AREA - BLOOMFIELD**

Perfect family home featuring lg L.R., formal D.R., lg EIK, 3 BR's, garage & lg. yard. Walk to schools & trans. Call Mickey or Elaine 743-4017. Asking \$159,900.

**277 Broad Street, Bloomfield, New Jersey**

**(201) 429-7400**

Each office independently owned and operated

MEMBER OF BLOOMFIELD GLEN RIDGE

NUTLEY, BELLEVILLE BOARD OF REALTORS

**SHERIFF'S SALE**  
SUPERIOR COURT OF NEW JERSEY  
CHANCERY DIVISION, ESSEX COUNTY  
DOCKET NO. F-2512-86, ALLIANCE MORTGAGE COMPANY, PLAINTIFF vs. ALBERT J. JAMES, JR., et al. DEFENDANTS. Execution For Sale of Mortgaged Premises.

By virtue of the above stated writ of Execution, to me directed, I shall expose for sale by Public Auction, in SHERIFF'S OFFICE, Essex County Courts Building in Newark, on Tuesday, the 23rd day of September, next, at one thirty P.M. (Prevaling Time):

Municipality: Irvington

COUNTY AND STATE: County of Essex, State of N.J.

STREET AND BLOCK: 104-136

UNDER ADEQUATE

TAX BLOCK & LOT: BLOCK 89 LOT 1

DIMENSIONS OF LOT: approx. 50 x 100

NEAREST CROSS STREET: FEET

Under Adequate

A full legal description can be found in the Office of the Register of Essex County, in book 5146, page 26.

A DEPOSIT OF 20% OF THE BID PRICE IN CASH OR CERTIFIED FUNDS IS REQUIRED AT THE TIME OF SALE.

The approximate amount of the Judgment to be satisfied by said sale is the sum of SIXTY FOUR THOUSAND ONE HUNDRED THIRTY SIX DOLLARS AND EIGHTY FIVE CENTS (\$64,136.85) together with the costs of this sale.

The Sheriff reserves the right to adjourn the sale from time to time as provided by Law.

Newark, N.J. August 18, 1986  
THOMAS J. DALESSIO, Sheriff  
WILLIAM M. POWERS, Jr., Attorney

Bloomfield Times  
Aug. 28, Sept. 4, 11, 18, 1986  
Fee: \$90.24 No. 808-788

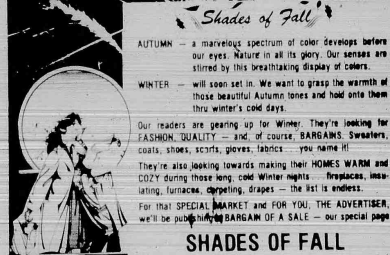
**SHERIFF'S SALE**  
SUPERIOR COURT OF NEW JERSEY  
CHANCERY DIVISION, ESSEX COUNTY  
DOCKET NO. F-2512-86, ALLIANCE MORTGAGE COMPANY, PLAINTIFF vs. ALBERT J. JAMES, JR., et al. DEFENDANTS. Execution For Sale of Mortgaged Premises.

By virtue of the above stated writ of Execution, to me directed, I shall expose for sale by Public Auction, in SHERIFF'S OFFICE, Essex County Courts Building in Newark, on Tuesday, the 23rd day of September, next, at one thirty P.M. (Prevaling Time):

Municipality: City of Newark  
Street address: 71 Oakland Terrace  
Tax Lot and Block: Lot 10, Block 4174

Approximate dimensions: 100 feet by 35 feet  
Nearest cross street: Cliff Street 210

## SHADES OF FALL



**SHADES OF FALL**

For the low price of \$3.44, per column inch, you can reach the readership with one of the highest degree of purchasing power and discretionary income in Essex County - THE NUTLEY SUM, BELLEVILLE TIMES and BLOOMFIELD LIFE READERS - YOUR BEST PROSPECTS.

**PUBLICATION DATES DEADLINES**

Thurs., Sept. 18th Friday, Sept. 12th

Thurs., Sept. 25th Friday, Sept. 19th

CALL NOW! 667-3000 CLASSIFIED

**SHERIFF'S SALE**  
SUPERIOR COURT OF NEW JERSEY  
CHANCERY DIVISION, ESSEX COUNTY  
DOCKET NO. F-2770-86, NEW JERSEY MORTGAGE FINANCE AGENCY, PLAINTIFF vs. KENNETH WILLIAMS, et al. DEFENDANTS. Execution For Sale of Mortgaged Premises.

By virtue of the above stated writ of Execution, to me directed, I shall expose for sale by Public Auction, in SHERIFF'S OFFICE, Essex County Courts Building in Newark, on Tuesday, the 23rd day of September, next, at one thirty P.M. (Prevaling Time):

Property to be sold is located in the City of East Orange, County of Essex, and State of New Jersey.

Thomases known as 184 North 18th Street

Tax Lot No. 32 Block No. 71

Approx. Dimensions: 108 x 31 approx.

Nearest Cross Street: Fourth Avenue

199' x

A full legal description can be found in the Office of the Register of Essex County, in book 4771, page 846.

A DEPOSIT OF 20% OF THE BID PRICE IN CASH OR CERTIFIED FUNDS IS REQUIRED AT THE TIME OF SALE.

The approximate amount of the Judgment to be satisfied by said sale is the sum of FORTY FIVE THOUSAND TWO HUNDRED NINETY TWO DOLLARS AND FORTY EIGHT CENTS (\$45,292.48) together with the costs of this sale.

The Sheriff reserves the right to adjourn the sale from time to time as provided by Law.

Newark, N.J. August 18, 1986  
THOMAS J. DALESSIO, Sheriff  
EDWARD CASEL, Attorney

Bloomfield Times  
Aug. 28, Sept. 4, 11, 18, 1986  
Fee: \$77.08 No. 808-788

**SHERIFF'S SALE**  
SUPERIOR COURT OF NEW JERSEY  
CHANCERY DIVISION, ESSEX COUNTY  
DOCKET NO. F-1471-85, AUANCE MORTGAGE COMPANY, PLAINTIFF vs. JAMES ROGERS, et al. DEFENDANTS. Execution For Sale of Mortgaged Premises.

By virtue of the above stated writ of Execution, to me directed, I shall expose for sale by Public Auction, in SHERIFF'S OFFICE, Essex County Courts Building in Newark, on Tuesday, the 23rd day of September, next, at one thirty P.M. (Prevaling Time):

Property to be sold is located in the City of Irvington, County of Essex, and State of New Jersey.

Known as 55-68 Chapman Place, Irvington, New Jersey

Approx. Dimensions: 40' x 110' (Irregular)

Approx. 50 feet front by 50 feet back by sides

104 feet and 116 feet

Nearest Cross Street: Situate on the easterly side of Chapman Road, 331 feet from the southerly side of Laurel Avenue

A full legal description can be found in the Office of the Register of Essex County, Book 4769, page 295

A DEPOSIT OF 20% OF THE BID PRICE IN CASH OR CERTIFIED FUNDS IS REQUIRED AT THE TIME OF SALE.

The approximate amount of the Judgment to be satisfied by said sale is the sum of SIXTY THOUSAND FIVE HUNDRED FIFTY TWO DOLLARS AND FIFTY CENTS (\$60,552.00) together with the costs of this sale.

The Sheriff reserves the right to adjourn the sale from time to time as provided by Law.

Newark, N.J. August 11, 1986  
THOMAS J. DALESSIO, Sheriff  
ZUCKER, GOLDBERG, BECKER & ACKERMAN, Attorneys

Bloomfield Times  
Aug. 21, 28  
Sept. 4, 11, 1986  
Fee: \$90.24 No. 806-788

**SHERIFF'S SALE**  
SUPERIOR COURT OF NEW JERSEY  
CHANCERY DIVISION, ESSEX COUNTY  
DOCKET NO. F-1240-86, MNC MORTGAGE COMPANY, a wholly owned corp. PLAINTIFF vs. ALBERT JAMES, et al. DEFENDANTS. Execution For Sale of Mortgaged Premises.

By virtue of the above stated writ of Execution, to me directed, I shall expose for sale by Public Auction, in SHERIFF'S OFFICE, Essex County Courts Building in Newark, on Tuesday, the 16th day of September, next, at one thirty P.M. (Prevaling Time):

The property to be sold is located in the Township of Irvington in the County of Essex, and State of New Jersey.

Known as 27-28 in Block Chapman Place, Irvington, New Jersey

Approx. Dimensions: 40' x 110' (Irregular)

Approx. 50 feet front by 50 feet back by sides

104 feet and 116 feet

Nearest Cross Street: Situate on the easterly side of Chapman Road, 331 feet from the southerly side of Laurel Avenue

A full legal description can be found in the Office of the Register of Essex County, Book 4769, page 295

A DEPOSIT OF 20% OF THE BID PRICE IN CASH OR CERTIFIED FUNDS IS REQUIRED AT THE TIME OF SALE.

The approximate amount of the Judgment to be satisfied by said sale is the sum of SIXTY THOUSAND FIVE HUNDRED FIFTY TWO DOLLARS AND FIFTY CENTS (\$60,552.00) together with the costs of this sale.

The Sheriff reserves the right to adjourn the sale from time to time as provided by Law.

Newark, N.J. August 11, 1986  
THOMAS J. DALESSIO, Sheriff  
ZUCKER, GOLDBERG, BECKER & ACKERMAN, Attorneys

Bloomfield Times  
Aug. 21, 28  
Sept. 4, 11, 1986  
Fee: \$90.24 No. 806-788

**SHERIFF'S SALE**  
SUPERIOR COURT OF NEW JERSEY  
CHANCERY DIVISION, ESSEX COUNTY  
DOCKET NO. F-1240-86, MNC MORTGAGE COMPANY, a wholly owned corp. PLAINTIFF vs. ALBERT JAMES, et al. DEFENDANTS. Execution For Sale of Mortgaged Premises.

By virtue of the above stated writ of Execution, to me directed, I shall expose for sale by Public Auction, in SHERIFF'S OFFICE, Essex County Courts Building in Newark, on Tuesday, the 16th day of September, next, at one thirty P.M. (Prevaling Time):

The property to be sold is located in the Township of Irvington in the County of Essex, and State of New Jersey.

Known as 27-28 in Block Chapman Place, Irvington, New Jersey

Approx. Dimensions: 40' x 110' (Irregular)

Approx. 50 feet front by 50 feet back by sides

104 feet and 116 feet

Nearest Cross Street: Situate on the easterly side of Chapman Road, 331 feet from the southerly side of Laurel Avenue

A full legal description can be found in the Office of the Register of Essex County, Book 4769, page 295

A DEPOSIT OF 20% OF THE BID PRICE IN CASH OR CERTIFIED FUNDS IS REQUIRED AT THE TIME OF SALE.

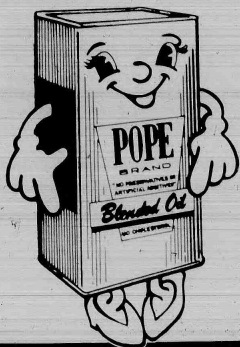
The approximate amount of the Judgment to be satisfied by said sale is the sum of SIXTY THOUSAND FIVE HUNDRED FIFTY TWO DOLLARS AND FIFTY CENTS (\$60,552.00) together with the costs of this sale.

The Sheriff reserves the right to adjourn the sale from time to time as provided by Law.

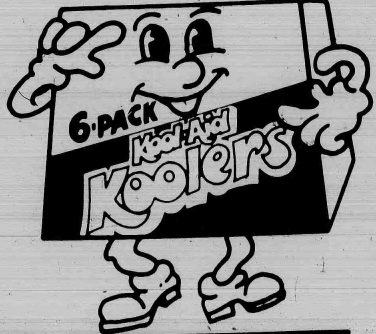
Newark, N.J. August 11, 1986  
THOMAS J. DALESSIO, Sheriff  
ZUCKER, GOLDBERG, BECKER & ACKERMAN, Attorneys

Bloomfield Times  
Aug. 21, 28  
Sept. 4, 11, 1986  
Fee: \$90.24 No. 806-788





Check Your  
Local  
ShopRite  
For  
LABOR  
DAY  
STORE  
HOURS



WHY PAY MORE?

**Pope 10% Blended Oil**

**1.99**

1 gal can

ALL VARIETIES

**Shasta Regular or Diet Soda**

**8.100**

12 oz. cans

WHITE OR BEIGE

**Marcal Paper Towels**

**.39**

100-ct roll

6-PACK ALL VARIETIES

**Kool-Aid Koolers**

**1.89**

REG 1.79

50 40 oz 1 w

# ShopRite's BIG BRAND BASH!

REG. OR CAFFEINE FREE

**Reg. or Diet Coke or Tab**

**.99**

2-lit. btl.

ALL VARIETIES

**Pillsbury Plus Cake Mix**

**.69**

1-lb. 7-1/2 oz. box

ALL VARS. 3-PK.

**Ssips Drinks**

**.44**

25.35-oz. 1-lb. pkg.

SOLID PACK, IN OIL OR WATER

**Bumble Bee White Tuna**

**.99**

6-lb. 6-oz. can



FARM FLAVOR, IN LIGHT SYRUP, HALVES OR SLICED

**Yellow Cling Peaches**

**.59**

1-lb. 13-oz. can

INSTANT COFFEE

**Maxwell House**

**4.99**

12-oz. jar

TREE TOP CLEAR OR NATURAL

**Apple Juice**

**.99**

1-gal. btl.

REGULAR OR LITE

**Log Cabin Syrup**

**1.79**

1-qt. 8-oz. btl.

ShopRite HALVES OR SLICED

**Bartlett Pears**

**.79**

1-lb. 13-oz. can

ALL VARIETIES, 9-PACK

**Hi-C Fruit Drinks**

**1.48**

76.05-oz. pkg.

KEEBLER REG. OR UNSALTED

**Zesta Saltines**

**.79**

1-lb. box

FAMILY FUDGE

**Pillsbury Brownie Mix**

**.99**

1-lb. 5-oz. box

ShopRite

**Sandwich Bags**

**1/2 PRICE**

200-ct. box

1-lb. 9-oz. 100-ct. bag

PRICE BREAK, REG. \$9.99 HEAVY DUTY

**Ivory Bath Soap**

**1.49**

6-lb. 6-oz. box

WITH TRIGGER BLUE OR LEMON

**Wisk Liquid Detergent**

**4.99**

1-gal. btl.

**Windex Window Cleaner**

**1.19**

1-gal. 6-oz. btl.

**SAVE UP TO 20% OFF**

**MFG. SUGGESTED LIST PRICE ON**

- Non-Sensory Pantyhose
- Beds & Wrangler Socks
- Fruit Of The Loom Mens & Ladies Styles
- Cosmetics & Hair Care Notions

(Prices marked, reflect discount up to 20% off manufacturer's list price.)

**The Dairy Place**

REGULAR QUARTERS

**ShopRite Margarine**

**3.100**

1-lb. pkgs.

ShopRite

**Sour Cream**

**.69**

1-pt. can

FRUIT PUNCH OR

**Tropicana Lemonade**

**.59**

64-oz. can

**The MEATing Place**

ANY SIZE PKG., NOT LESS THAN

**80% Lean Ground Beef**

**1.19**

lb.

NOT LESS THAN 80%

**Lean Ground Beef Patties**

**1.39**

ANY SIZE PKG.

1-lb. 13-oz. can

**The Appy Place**

STORE SLICED

**Turkey Breast**

**3.99**

1-lb. 13-oz. can

**The Deli Place**

HYGRADE'S MEAT OR BEEF

**Ballpark Franks**

**2.300**

1-lb. pkgs.

ShopRite

**Imported Sliced Ham**

**2.99**

1-lb. pkgs.

WHY PAY MORE?

**Ba-Tampte Pickles**

**1.19**

1-lb. jar

THE ORIGINAL LONDON BROIL

**Beef Flank Steak**

**2.69**

1-lb. 13-oz. can

U.S.D.A. CHOICE, CHUCK CUT

**Boneless Beef**

**1.79**

1-lb. 13-oz. can

U.S.D.A. CHOICE BEEF ROUND

**Cubed Steaks**

**2.49**

1-lb. 13-oz. can

THORN APPLE VALLEY CHRYVAL, WATER ADDED

**Smoked Ham**

**1.29**

1-lb. 13-oz. can

FROZEN BUTTERFLY WHITE & DARK

**Boneless Turkey**

**1.99**

1-lb. 13-oz. can

HOLLY FARMS JUMBO PACK, SPLIT WIRE CAGE

**Chicken Breast**

**1.99**

1-lb. 13-oz. can

HOLLY FARMS, SPIT BREAST THIGH & DRUMSTICK

**Pick Of The Chick**

**1.49**

1-lb. 13-oz. can

THORN APPLE VALLEY THICK CUT

**Corned Beef Brisket**

**1.49**

1-lb. 13-oz. can

THORN APPLE VALLEY

**Beef Griddle Franks**

**4.49**

1-lb. 13-oz. can

WHITE'S FROZEN, ALL VARS.

**Brown 'N Serve Sausages**

**.99**

1-lb. 13-oz. can

SANDWICH STEAKS

**2.99**

1-lb. 13-oz. can

CHICKEN DRUMSTICKS

**1.19**

1-lb. 13-oz. can

**Fresh Fish Market**

U.S. GRADE 'A' NEW ENGLAND

**Fresh Fillet Of Flounder**

**3.99**

1-lb. 13-oz. can

**Health & Beauty Aids**

WHY PAY MORE?

**Aqua-fresh Toothpaste**

**.99**

4-oz. tube

REGULAR STRENGTH

**Tylenol Tablets**

**3.49**

100-ct. box

SUPER (25%) OR REG. OR DODD

**Stayfree Maxi Pads**

**2.99**

30-ct. box

**The Produce Place**

100% GOOD EATING: 14 SIZE

**California Broccoli**

**.79**

1-lb. 13-oz. can

**The Family Pharmacy Dept.**

CALL US AT 235-0821

Antibiotics

Most antibiotics should be taken on an empty stomach to achieve maximum absorption and utilization of the drug. Tetracycline, a widely used antibiotic, should not be taken with food, milk, milk products or antacids because they will reduce the effect of the medication. Iron containing preparations, for all, will also reduce the absorption of this important drug.

**General Merchandise**

ShopRite

**Wide Ruled Filler Paper**

**.89**

100-ct. box

76-CT. WIDE RULE 10 1/2" x 8"

**1 Subject Notebook**

**3.1.00**

HERITAGE EDITION

**Funk & Wagnalls Encyclopedia**

**4.99**

VOL. #3

WITH FREE VOL. #2

**DICTIONARY**

YELLOW, WHITE OR BICOLOR

**Sweet Corn**

**6.99**

ears

EXTRA LARGE 5X6 SIZE

**Red Ripe Tomatoes**

**.69**

30-size

**Pascal Celery**

**.69**

1-lb. 13-oz. can

U.S. #1 GRADE

**Yellow Onions**

**.99**

1-lb. 13-oz. can

**The Family Pharmacy Dept.**

CALL US AT 235-0821

OPEN 7 DAYS:

Monday-Thursday 9am-6pm

Friday 9am-6pm

Saturday 9am-6pm

Sunday 9am-6pm

Our pharmacists will gladly arrange transfer of an existing prescription from your present pharmacy to us.

(Captrol)	*Capoten*, 25 mg. Tablets	100's	32.99
*Lo-Oval*, 21 or 28		11.69	
(Flunisolide)	*Nasalide*, 0.025%	25 ml	14.99
(Potassium Chloride)	*Slow K*, Tablets	100's	9.99
	*Inderide*, 40/25 Tablets	100's	29.99

\*Requires Prescription

Expires 9/6/86

Call us at... 235-0821

\*Quantities less than those listed may be slightly higher in price.

**ShopRite Coupon**

WITH THIS COUPON ONE (1) 1-LB. BOX OF ELBOWS TWISTS, THIN OR REG.

**Mueller's Spaghetti**

**.39**

Coupon good at any ShopRite Market. Limit one per family. Expires Sun. Aug. 31 thru Sat. Sept. 6, 1986.

**SAVE .10**

**ShopRite Coupon**

WITH THIS COUPON ONE (1) 5 1/2 OZ. BAG, ALL VARIETIES

**Lays Potato Chips**

**.79**

Coupon good at any ShopRite Market. Limit one per family. Expires Sun. Aug. 31 thru Sat. Sept. 6, 1986.

**SAVE .20**

In order to assure a sufficient supply of sales items for all our customers, we must reserve the right to limit the purchase to units of 4 of any sales items, except where otherwise noted. Not responsible for typographical errors. Prices effective Sun. Aug. 31 thru Sat. Sept. 6, 1986. None sold to other retailers or wholesalers. Adwork does not necessarily represent item on sale, it is for display purposes only. Copyright WAKEFERN FOOD CORPORATION 1986.